

Recombinant human Kallikrein 11/KLK11 protein

Catalog Number: ATGP2773

PRODUCT INFORMATION

Expression system

E.coli

Domain

54-278aa

UniProt No.

Q9UBX7

NCBI Accession No.

NP_659196

Alternative Names

Kallikrein-11 isoform 2, Kallikrein related peptidase 11, KLK11, hK11, Hippostasin, Serine protease 20, Trypsin-like protease, PRSS20, TLSP

PRODUCT SPECIFICATION

Molecular Weight

24.8 kDa (226aa)

Concentration

1mg/ml (determined by Bradford assay)

Formulation

Liquid in. 20mM Tris-HCl buffer (pH 8.0) containing 10% glycerol, 0.4M urea

Purity

> 85% by SDS-PAGE

Tag

Non-Tagged

Application

SDS-PAGE, Denatured

Storage Condition

Can be stored at +2C to +8C for 1 week. For long term storage, aliquot and store at -20C to -80C. Avoid repeated freezing and thawing cycles.

BACKGROUND

Description

Kallikreins are a subgroup of serine proteases having diverse physiological functions. Growing evidence suggests that many kallikreins are implicated in carcinogenesis and some have potential as novel cancer and other disease biomarkers. This gene is one of the fifteen kallikrein subfamily members located in a cluster on chromosome 19. Alternate splicing of this gene results in multiple transcript variants encoding distinct isoforms which are differentially expressed. Recombinant human KLK11 protein was expressed in E. coli.

Recombinant human Kallikrein 11/KLK11 protein

Catalog Number: ATGP2773

Amino acid Sequence

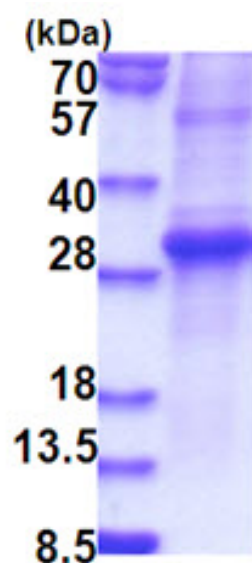
MIIKGFECKP HSQPWQAALF EKTRLLCGAT LIAPRWLLTA AHCLKPRYIV HLGQHNLQKE EGCEQTRTAT ESFPHPGFNN
SLPNKDHRND IMLVKMASPV SITWAVRPLT LSSRCVTAGT SCLISGWGST SSPQLRLPHT LRCANITIE HQKCENAYPG
NITDTMVCAS VQEGGKDSCQ GDSGGPLVCN QSLQGIISWG QDPCAITRKP GVYTKVCKYV DWIQET

General References

Patsis C, Yiotakis I, et al. (2012) Clin Biochem. 45(9):623-30. doi: 10.1016.

DATA

SDS-PAGE



3ug by SDS-PAGE under reducing condition and visualized by coomassie blue stain.

15% SDS-PAGE (3ug)