

Recombinant human GFPT1 protein

Catalog Number: ATGP2777

PRODUCT INFORMATION

Expression system

E.coli

Domain

332-699aa

UniProt No.

Q06210

NCBI Accession No.

NP_001231639

Alternative Names

Glutamine--fructose-6-phosphate transaminase 1, CMSTA1, GFA,GFAT, GFAT 1, GFAT1, GFAT1m, GFPT, GFPT1L, MSLG

PRODUCT SPECIFICATION

Molecular Weight

43.7 kDa (391aa) confirmed by MALDI-TOF

Concentration

1mg/ml (determined by BRADFORD assay)

Formulation

Liquid in. 20mM Tris-HCl buffer (pH 8.0) containing 0.15M NaCl, 50% glycerol, 2mM DTT, 2mM EDTA

Purity

> 95% by SDS-PAGE

Tag

His-Tag

Application

SDS-PAGE

Storage Condition

Can be stored at +2C to +8C for 1 week. For long term storage, aliquot and store at -20C to -80C. Avoid repeated freezing and thawing cycles.

BACKGROUND

Description

GFPT1 is the first and rate-limiting enzyme of the hexosamine pathway and controls the flux of glucose into the hexosamine pathway. The product of this gene catalyzes the formation of glucosamine 6-phosphate. Recombinant human GFPT1 protein, fused to His-tag at N-terminus, was expressed in E. coli and purified by using conventional chromatography techniques.

Recombinant human GFPT1 protein

Catalog Number: ATGP2777

Amino acid Sequence

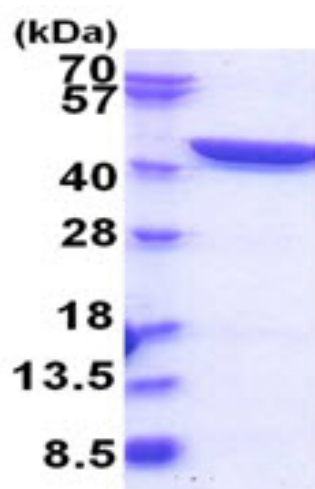
MGSSHHHHHH SSSLVPRGSH MGSQQIMKGN FSSFMQKEIF EQPESVNTM RGRVNFDDYT VNLGGLKDHI KEIQRCRRLI
LIACGTSYHA GVATRQVLEE LTELPMVEL ASDFLDRNTP VFRDDVCFLL SQSGETADTL MGLRYCKERG ALTVGITNTV
GSSISRETDC GVHINAGPEI GVASTKAYTS QFVSLVMFAL MMCDDRISMQ ERRKEIMLGL KRLPDLIKEV LSMDDIEIQL
ATELYHQKSV LIMGRGYHYA TCLEGALKIK EITYMHSEGI LAGELKHGPL ALVDKLPVI MIIMRDHTYA KCQNALQQVV
ARQGRPVVIC DKEDTETIKN TKRTIKVPHS VDCLQGILSV IPLQLLAFHL AVLRGYDVDF PRNLAKSVTV E

General References

Selcen,D., et al. (2013) Neurology 81 (4), 370-378
Huh,S.Y., et al. (2012) Muscle Nerve 46 (4), 600-604

DATA

SDS-PAGE



3ug by SDS-PAGE under reducing condition and visualized by coomassie blue stain.

15% SDS-PAGE (3ug)