

# Recombinant human PDE6H protein

Catalog Number: ATGP2785

## PRODUCT INFORMATION

---

### Expression system

E.coli

### Domain

1-83aa

### UniProt No.

Q13956

### NCBI Accession No.

NP\_006196

### Alternative Names

Retinal cone rhodopsin-sensitive cGMP 3'5'-cyclic phosphodiesterase subunit gamma, Retinal cone rhodopsin-sensitive cGMP 3',5'-cyclic phosphodiesterase subunit gamma, ACHM6, RCD3

## PRODUCT SPECIFICATION

---

### Molecular Weight

11.5 kDa (106aa) confirmed by MALDI-TOF

### Concentration

0.5mg/ml (determined by Bradford assay)

### Formulation

Liquid in. 20mM Tris-HCl buffer (pH 8.0) containing 0.2M NaCl, 40% glycerol, 2mM DTT, 0.1mM PMSF

### Purity

> 80% by SDS-PAGE

### Tag

His-Tag

### Application

SDS-PAGE

### Storage Condition

Can be stored at +2C to +8C for 1 week. For long term storage, aliquot and store at -20C to -80C. Avoid repeated freezing and thawing cycles.

## BACKGROUND

---

### Description

PDE6H is the inhibitory (or gamma) subunit of the cone-specific cGMP phosphodiesterase, which is a tetramer composed of two catalytic chains (alpha and beta), and two inhibitory chains (gamma). It is specifically expressed in the retina, and is involved in the transmission and amplification of the visual signal. Mutations in this gene are associated with retinal cone dystrophy type 3A (RCD3A). Recombinant human PDE6H protein, fused to His-tag at N-terminus, was expressed in E. coli and purified by using conventional chromatography

# Recombinant human PDE6H protein

Catalog Number: ATGP2785

techniques.

## Amino acid Sequence

<MGSSHHHHHH SSGLVPRGSH MGS>MSDNTTL PAPASNQGPT TPRKGPPKFK QRQTRQFKSK PPKKGVKGF  
DDIPGMEGLG TDITVICPWE AFSHLELHEL AQFGII

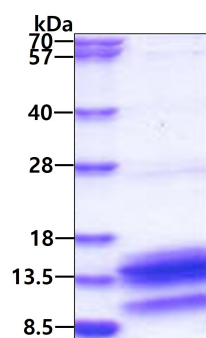
## General References

Shimizu-Matsumoto A., et al. (1996) Genomics 32:121-124.

## DATA

---

### SDS-PAGE



3ug by SDS-PAGE under reducing condition and visualized by coomassie blue stain.