

Recombinant human NDEL1 protein

Catalog Number: ATGP2790

PRODUCT INFORMATION

Expression system

E.coli

Domain

1-328aa

UniProt No.

Q9GZM8

NCBI Accession No.

NP_001020750.1

Alternative Names

Nuclear distribution protein nudE-like 1, EOPA, MITAP1, NuDEL

PRODUCT SPECIFICATION

Molecular Weight

39.4 kDa (351aa) confirmed by MALDI-TOF

Concentration

0.25mg/ml (determined by Bradford assay)

Formulation

Liquid in. 20mM Tris-HCl buffer (pH 8.0) containing 0.15M NaCl, 10% glycerol, 1mM DTT

Purity

> 80% by SDS-PAGE

Tag

His-Tag

Application

SDS-PAGE

Storage Condition

Can be stored at +2C to +8C for 1 week. For long term storage, aliquot and store at -20C to -80C. Avoid repeated freezing and thawing cycles.

BACKGROUND

Description

NDEL1 is a coiled-coil protein that plays a role in multiple processes including cytoskeletal organization, cell signaling and neuron migration, outgrowth and maintenance. Alternatively spliced transcript variants encoding multiple isoforms have been observed for this gene, and a pseudogene of this gene is located on the long arm of chromosome X. Recombinant human NDEL1 protein, fused to His-tag at N-terminus, was expressed in E. coli and purified by using conventional chromatography techniques.

Recombinant human NDEL1 protein

Catalog Number: ATGP2790

Amino acid Sequence

<MGSSHHHHHH SSGLVPRGSH MGS>MDGEDIP DFSSLKEETA YWKELSLKYK QSFQEARDEL VEFQEGSREL
EAELEAQLVQ AEQRNRDLQA DNQRLKYEVE ALKEKLEHQY AQSYKQVSVL EDDLSTRAI KEQLHKYVRE LEQANDDLER
AKRATIVSLE DFEQRLNQAI ERNAFLESEL DEKESLLVSV QRLKDEARDL RQELAVRERQ QEVTRKSAPS SPTLDCEKMD
SAVQASLSLP ATPVGKGTEN TFPSPKAIPN GFGTSPLTPS ARISALNIVG DLLRKVGALE SKLAACRNFA KDQASRKS
YI SGNVNCGVLN GNGTKFSRSG HTSFFDKGQE KVIFPTLFMG Q

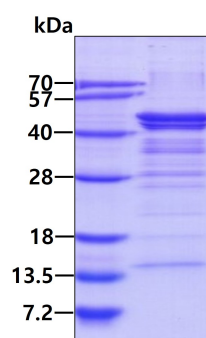
General References

Yan X., et al. (2003) Mol. Cell. Biol. 23:1239-1250

Hayashi M.A.F., et al. (2005) Proc. Natl. Acad. Sci. u.S.A. 102:3828-3833

DATA

SDS-PAGE



3 μ g by SDS-PAGE under reducing condition and visualized by coomassie blue stain.