

Recombinant human IMMP2L protein

Catalog Number: ATGP2800

PRODUCT INFORMATION

Expression system

E.coli

Domain

38-175aa

UniProt No.

Q96T52

NCBI Accession No.

NP_001231535

Alternative Names

mitochondrial inner membrane protease subunit 2, IMP2, IMP2-LIKE

PRODUCT SPECIFICATION

Molecular Weight

18kDa (161aa) confirmed by MALDI-TOF

Concentration

0.5mg/ml (determined by Bradford assay)

Formulation

Liquid in. 20mM Tris-HCl buffer (pH 8.0) containing 0.15M NaCl, 50% glycerol, 1mM DTT

Purity

> 95% by SDS-PAGE

Tag

His-Tag

Application

SDS-PAGE

Storage Condition

Can be stored at +2C to +8C for 1 week. For long term storage, aliquot and store at -20C to -80C. Avoid repeated freezing and thawing cycles.

BACKGROUND

Description

IMMP2L is a protein involved in processing the signal peptide sequences used to direct mitochondrial proteins to the mitochondria. This protein resides in the mitochondria and is one of the necessary proteins for the catalytic activity of the mitochondrial inner membrane peptidase (IMP) complex. Two variants that encode the same protein have been described for this gene. Recombinant human IMMP2L protein, fused to His-tag at N-terminus, was expressed in E. coli and purified by using conventional chromatography techniques.

Recombinant human IMMP2L protein

Catalog Number: ATGP2800

Amino acid Sequence

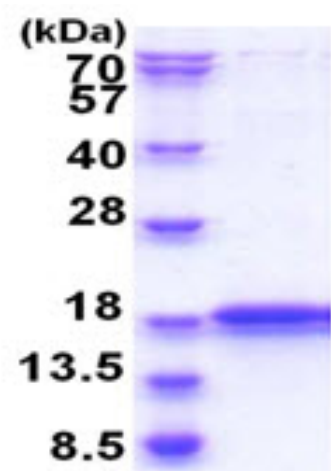
MGSSHHHHHH SSSLVPRGSH MGSRVEGASM QPSLNPGGSQ SSDVLLNHW KVRNFEVHRG DIVSLVSPKN PEQKIIKRVI
ALEGDIVRTI GHKNRYVKVP RGHIIWVEGDH HGHSFDSNSF GPVSLGLLHA HATHILWPPE RWQKLESVLP PERLPVQREE E

General References

Clarke, R.A., et al. (2012) *Transl Psychiatry* 2, E158
Maestrini E., et al. (2010) *Mol. Psychiatry* 15 (9), 954-968

DATA

SDS-PAGE



15% SDS-PAGE (3ug)

3ug by SDS-PAGE under reducing condition and visualized by coomassie blue stain.