

Recombinant human NCS1 protein

Catalog Number: ATGP2807

PRODUCT INFORMATION

Expression system

E.coli

Domain

1-190aa

UniProt No.

P62166

NCBI Accession No.

NP_055101

Alternative Names

Neuronal calcium sensor 1 isoform 1, FLuP, FREQ

PRODUCT SPECIFICATION

Molecular Weight

24.3. kDa (213aa) confirmed by MALDI-TOF

Concentration

1mg/ml (determined by Bradford assay)

Formulation

Liquid in. 20mM Tris-HCl buffer (pH 8.0) containing 0.15M NaCl, 30% glycerol, 1mM DTT

Purity

> 95% by SDS-PAGE

Tag

His-Tag

Application

SDS-PAGE

Storage Condition

Can be stored at +2C to +8C for 1 week. For long term storage, aliquot and store at -20C to -80C. Avoid repeated freezing and thawing cycles.

BACKGROUND

Description

NCS1 is a member of the neuronal calcium sensor gene family, which encode calcium-binding proteins expressed predominantly in neurons. This protein regulates G protein-coupled receptor phosphorylation in a calcium-dependent manner and can substitute for calmodulin. It is associated with secretory granules and modulates synaptic transmission and synaptic plasticity. Multiple transcript variants encoding different isoforms have been found for this gene. Recombinant human NCS1 protein, fused to His-tag at N-terminus, was expressed in E. coli and purified by using conventional chromatography techniques.

Recombinant human NCS1 protein

Catalog Number: ATGP2807

Amino acid Sequence

MGSSHHHHHHH SSGLVPRGSH MGSMGKSNSK LKPEVVEELT RKTYFTEKEV QQWYKGFIDK CPSGQLDAAG FQKIYKQFFP
FGDPTKFATF VFNVFDENKD GRIEFSEFIQ ALSVTSRGT LDEKLRWAFKL YDLNDNGYIT RNEMLDIVDA IYQMVGNTVE
LPEEENTPEK RVDRIFAMMD KNADGKLT LQEFQEGSKADP SIVQALS LYDGLV

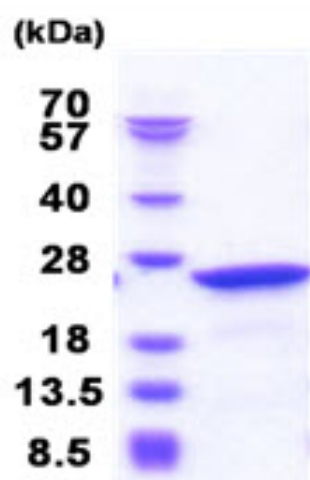
General References

Nakamura T.Y., et al (2001). Proc. Natl. Acad. Sci. u.S.A. 98:12808-12813

Bahi N., et al (2003). Hum. Mol. Genet. 12:1415-1425

DATA

SDS-PAGE



15% SDS-PAGE (3ug)

3ug by SDS-PAGE under reducing condition and visualized by coomassie blue stain.