

# Recombinant e.coli glk protein

Catalog Number: ATGP2810

## PRODUCT INFORMATION

---

### Expression system

E.coli

### Domain

1-321aa

### UniProt No.

P0A6V8

### NCBI Accession No.

NP\_416889

### Alternative Names

Glucokinase, ECK2384, JW2385

## PRODUCT SPECIFICATION

---

### Molecular Weight

37.1 kDa (344aa) confirmed by MALDI-TOF

### Concentration

1mg/ml (determined by Bradford assay)

### Formulation

Liquid in. 20mM Tris-HCl buffer (pH 8.0) containing 0.15M NaCl, 10% glycerol

### Purity

> 95% by SDS-PAGE

### Tag

His-Tag

### Application

SDS-PAGE

### Storage Condition

Can be stored at +2C to +8C for 1 week. For long term storage, aliquot and store at -20C to -80C. Avoid repeated freezing and thawing cycles.

## BACKGROUND

---

### Description

glk belongs to the bacterial glucokinase family. This protein is not highly important in E. coli as glucose is transported into the cell by the PTS system already as glucose 6-phosphate. Recombinant E. coli glk protein, fused to His-tag at N-terminus, was expressed in E. coli and purified by using conventional chromatography techniques.

### Amino acid Sequence

<MGSSHHHHHH SGLVPRGSH MGS>MTKYALV GDVGGTNARL ALCDIASGEI SQAKTYSGLD YPSLEAVIRV

# Recombinant e.coli glk protein

Catalog Number: ATGP2810

YLEEHKVEVK DGCIAIACPI TGDWVAMTNH TWAFSIAEMK KNLGFSLHEI INDFTAVSMA IPMLKKEHLI QFGGAEPVEG  
KPIAVYGAGT GLGVAHLVHV DKRWVSLPGE GGHVDFAPNS EEEAIILEIL RAEIGHVSAE RVLSGPGLVN LYRAIVKADN  
RLPENLKPKD ITERALADSC TDCRRALSLF CVIMGRFGGN LALNLGTFGG VFIAGGIVPR FLEFFKASGF RAAFEDKGRF  
KEYVHDIPVY LIVHDNPGLL GSGAHLRQTL GHIL

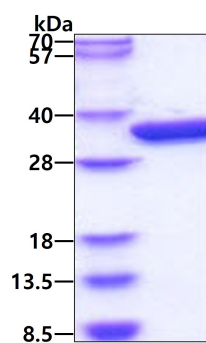
## General References

Kawai S, Mukai T, et al. (2005) J. Biosci. Bioeng. 99 (4): 320-30.

## DATA

---

### SDS-PAGE



3ug by SDS-PAGE under reducing condition and visualized by coomassie blue stain.