

Recombinant human SNAPC1 protein

Catalog Number: ATGP2817

PRODUCT INFORMATION

Expression system

E.coli

Domain

1-368aa

UniProt No.

Q16533

NCBI Accession No.

NP_003073

Alternative Names

snRNA-activating protein complex subunit1, PTFgamma, SNAP43

PRODUCT SPECIFICATION

Molecular Weight

45.4 kDa (391aa)

Concentration

1mg/ml (determined by Bradford assay)

Formulation

Liquid in. 20mM Tris-HCl buffer (pH 8.0) containing 10% glycerol

Purity

> 80% by SDS-PAGE

Tag

His-Tag

Application

SDS-PAGE, Denatured

Storage Condition

Can be stored at +2C to +8C for 1 week. For long term storage, aliquot and store at -20C to -80C. Avoid repeated freezing and thawing cycles.

BACKGROUND

Description

SNAPC1 is a part of the SNAPc complex required for the transcription of both RNA polymerase II and III small-nuclear RNA genes. It binds to the proximal sequence element (PSE), a non-TATA-box basal promoter element common to these 2 types of genes. Also, it recruits TBP and BRF2 to the u6 snRNA TATA box. Recombinant human SNAPC1 protein, fused to His-tag at N-terminus, was expressed in E. coli

Amino acid Sequence

MGSSHHHHHH SGLVPRGSH MGSMGTPPGL QTDCALLSR FQETDSVRFE DFTELWRNMK FGTIFCGRMR

Recombinant human SNAPC1 protein

Catalog Number: ATGP2817

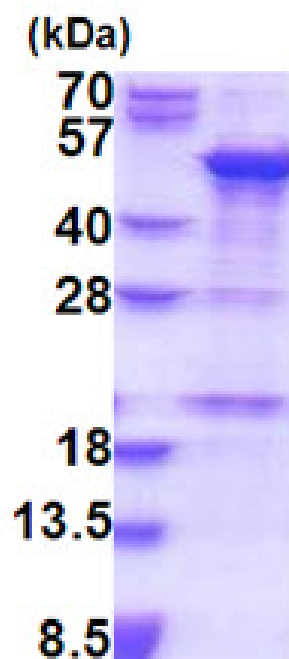
NLEKNMFTKE ALALAWRYFL PPYTFQIRVG ALYLLYGLYN TQLCQPKQKI RVALKDWDEV LKFQQDLVNA QHFDAAYIFR
KLRLDRAFHF TAMPKLLSYR MKKKIHRAEV TEEFKDPSDR VMKLITSDVL EEMLNVDHY QNMKHVISVD KSKPDKALS
IKDDFFDNIK NIVLEHQQWH KDRKNPSLKS KTNDGEEKME GNSQETERCE RAESLAKIKS KAFSVVIQAS KSRRHRQVKL
DSSSDSASG QGQVKATRKK EKKERLKPAG RKMSLRNKG N VQNIHKEDKP LSLMPVITE EEENESLSGT EFTASKRRR H

General References

Hinkley C.S., et al. (2003) J. Biol. Chem. 278:18649-18657.

DATA

SDS-PAGE



3ug by SDS-PAGE under reducing condition and visualized by coomassie blue stain.

15% SDS-PAGE (3ug)