

# Recombinant human MAK16 protein

Catalog Number: ATGP2820

## PRODUCT INFORMATION

---

### Expression system

E.coli

### Domain

1-300aa

### UniProt No.

Q9BXY0

### NCBI Accession No.

NP\_115898

### Alternative Names

MAK16 homolog, MAK16L, RBM13

## PRODUCT SPECIFICATION

---

### Molecular Weight

37.8 kDa (323aa) confirmed by MALDI-TOF (Molecular weight on SDS-PAGE will appear higher)

### Concentration

0.25mg/ml (determined by Bradford assay)

### Formulation

Liquid in. Phosphate-Buffered Saline (pH 7.4) 30% glycerol, 1mM DTT

### Purity

> 90% by SDS-PAGE

### Tag

His-Tag

### Application

SDS-PAGE

### Storage Condition

Can be stored at +2C to +8C for 1 week. For long term storage, aliquot and store at -20C to -80C. Avoid repeated freezing and thawing cycles.

## BACKGROUND

---

### Description

MAK16 belongs to the MAK16 family. Recombinant human MAK16 protein, fused to His-tag at N-terminus, was expressed in E. coli and purified by using conventional chromatography techniques.

### Amino acid Sequence

MGSSHHHHHH SGLVPRGSH MGSMQSDVI WDTLGNKQFC SFKIRTKTQS FCRNEYSLTG LCNRSSCPLA NSQYATIKEE  
KGQCYLYMKV IERAAFPRRL WERVRLSKNY EKALEQIDEN LIYWPRFIRH KCKQRFTKIT QYLIRIRKLT LKRQRKLVPL  
SKKVERREKR REEKALIAAQ LDNAIEKELL ERLKQDQTYGD IYNFPIHAFD KALEQQEAE DSSDTEEKDD DDDDEEDV GK

# Recombinant human MAK16 protein

Catalog Number: ATGP2820

REFVEDGEVD ESDISDFEDM DKLDASSDED QDGKSSSEEE EEKALSAKHK GKMPLRGPLQ RKRAYVEIEY EQETEPVAKA  
KTT

## General References

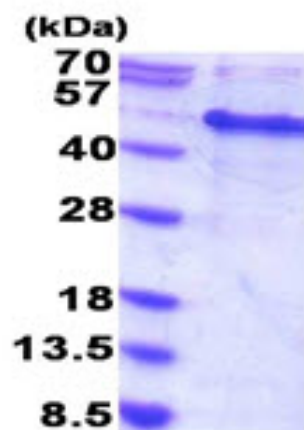
Andersen J.S., et al. (2002) *Curr. Biol.* 12:1-11

Scherl A., et al. (2002) *Mol. Biol. Cell.* 13:4100-4109

## DATA

---

### SDS-PAGE



3ug by SDS-PAGE under reducing condition and visualized by coomassie blue stain.

15% SDS-PAGE (3ug)