

Recombinant human EDAR protein

Catalog Number: ATGP2829

PRODUCT INFORMATION

Expression system

E.coli

Domain

27-448aa

UniProt No.

Q9UNE0

NCBI Accession No.

NP_071731

Alternative Names

Tumor necrosis factor receptor superfamily member EDAR, DL, ECTD10A, ECTD10B, ED1R, ED3, ED5, EDA-A1R, EDA1R, EDA3, HRM1

PRODUCT SPECIFICATION

Molecular Weight

48.2 kDa (445aa)

Concentration

0.25mg/ml (determined by Bradford assay)

Formulation

Liquid in. 20mM Tris-HCl buffer (pH 8.0) containing 10% glycerol

Purity

> 85% by SDS-PAGE

Tag

His-Tag

Application

SDS-PAGE, Denatured

Storage Condition

Can be stored at +2C to +8C for 1 week. For long term storage, aliquot and store at -20C to -80C. Avoid repeated freezing and thawing cycles.

BACKGROUND

Description

EDAR is a member of the tumor necrosis factor receptor family. This protein is a receptor for the soluble ligand ectodysplasin A, and can activate the nuclear factor-kappaB, JNK, and caspase-independent cell death pathways. It is required for the development of hair, teeth, and other ectodermal derivatives. Mutations in this gene result in autosomal dominant and recessive forms of hypohidrotic ectodermal dysplasia. Recombinant human EDAR protein, fused to His-tag at N-terminus, was expressed in E. coli

Recombinant human EDAR protein

Catalog Number: ATGP2829

Amino acid Sequence

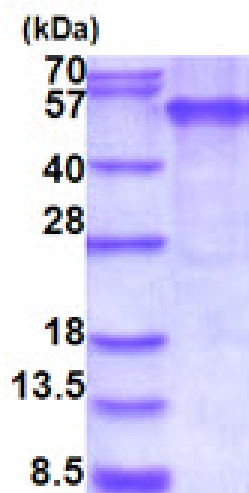
MGSSHHHHHH SSSLVPRGSH MGSEYSNCGE NEYQNQTGL CQECPPCGPG EEPYLSCGYG TKDEDYGCVP CPAEKFSKGG
YQICRRHKDC EGFFRATVLT PGDMENDAEC GPCLPGYYML ENRPRNIYGM VCYSCLLAPP NTKECVGATS GASANFPGTS
GSSTLSPFQH AHKELSGQGH LATALIAMS TIFIMAIIV LIIMFYILKT KPSAPACCTS HPGKSVEAQV SKDEEKKEAP
DNVVMFSEKD EFEKLTATPA KPTKSENDAS SENEQLSRS VDSDEEPAPD KQGSPELCLL SLVHLAREKS ATSNKSAGIQ
SRRKILDVY ANVCGVVEGL SPTELPFDCL EKTSRMLSST YNSEKAVVKT WRHLAESFGL KRDEIGGMDT GMQLFDRIST
AGYSIPPELLT KLVQIERLDA VESLCADILE WAGVVPPASQ PHAAS

General References

Yan M., et al. (2000) Science 290:523-527

DATA

SDS-PAGE



3ug by SDS-PAGE under reducing condition and visualized by coomassie blue stain.

15% SDS-PAGE (3ug)