

Recombinant human LOX protein

Catalog Number: ATGP2831

PRODUCT INFORMATION

Expression system

E.coli

Domain

169-417aa

UniProt No.

P28300

NCBI Accession No.

NP_002308

Alternative Names

Protein-lysine 6-oxidase, Lysyl oxidase

PRODUCT SPECIFICATION

Molecular Weight

31.4 kDa (272aa)

Concentration

1mg/ml (determined by Bradford assay)

Formulation

Liquid in. 20mM Tris-HCl buffer (pH 8.0) containing 10% glycerol

Purity

> 85% by SDS-PAGE

Tag

His-Tag

Application

SDS-PAGE, Denatured

Storage Condition

Can be stored at +2C to +8C for 1 week. For long term storage, aliquot and store at -20C to -80C. Avoid repeated freezing and thawing cycles.

BACKGROUND

Description

LOX is an extracellular copper enzyme that initiates the crosslinking of collagens and elastin. The enzyme catalyzes oxidative deamination of the epsilon-amino group in certain lysine and hydroxylysine residues of collagens and lysine residues of elastin. In addition to crosslinking extracellular matrix proteins, the encoded protein may have a role in tumor suppression. Defects in this gene are a cause of autosomal recessive cutis laxa type I (CL type I). Two transcript variants encoding different isoforms have been found for this gene. Recombinant human LOX protein, fused to His-tag at N-terminus, was expressed in E. coli.

Recombinant human LOX protein

Catalog Number: ATGP2831

Amino acid Sequence

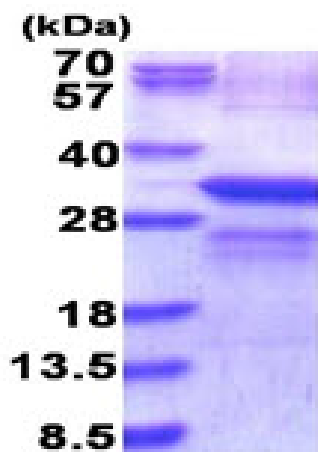
MGSSHHHHHH SSGLVPRGSH MGSDDPYNPY KYSDDNPPYN YYDTYERPRP GGRYRPGYGT GYFQYGLPDL VADPYYIQAS
TYVQKMSMYN LRCAAENCL ASTAYRADVR DYDHRVLLRF PQRVKNQGTS DFLPSRPRYS WEWHSCHQHY
HSMDEFSHYD LLDANTQRRV AEGHKASFCL EDTSCDYGYH RRFACTAHTQ GLSPGCYDTY GADIDCQWID ITDVKPGNYI
LKVSVNPSYL VPESDYTNNV VRCDIRYTG HAYASGCTIS PY

General References

Kim Y., et al. (1995) J. Biol. Chem. 270:7176-7182.
Contente S., et al. (1999) Mol. Cell. Biochem. 194:79-91.

DATA

SDS-PAGE



3ug by SDS-PAGE under reducing condition and visualized by coomassie blue stain.

15% SDS-PAGE (3ug)