

Recombinant human RPL35 protein

Catalog Number: ATGP2836

PRODUCT INFORMATION

Expression system

E.coli

Domain

1-123aa

UniProt No.

P42766

NCBI Accession No.

NP_009140

Alternative Names

Ribosomal protein L35, L35, 60S ribosomal protein L35

PRODUCT SPECIFICATION

Molecular Weight

16.9 kDa (146aa)

Concentration

0.25mg/ml (determined by Bradford assay)

Formulation

Liquid in. 20mM Tris-HCl buffer (pH 8.0) containing 10% glycerol

Purity

> 80% by SDS-PAGE

Tag

His-Tag

Application

SDS-PAGE, Denatured

Storage Condition

Can be stored at +2C to +8C for 1 week. For long term storage, aliquot and store at -20C to -80C. Avoid repeated freezing and thawing cycles.

BACKGROUND

Description

Ribosomes, the organelles that catalyze protein synthesis, consist of a small 40S subunit and a large 60S subunit. Together these subunits are composed of 4 RNA species and approximately 80 structurally distinct proteins. RPL35 is a ribosomal protein that is a component of the 60S subunit. The protein belongs to the L29P family of ribosomal proteins. It is located in the cytoplasm. As is typical for genes encoding ribosomal proteins, there are multiple processed pseudogenes of this gene dispersed through the genome. Recombinant human RPL35 protein, fused to His-tag at N-terminus, was expressed in E. coli.

Recombinant human RPL35 protein

Catalog Number: ATGP2836

Amino acid Sequence

MGSSHHHHHHH SSSLVPRGSH MGSMAMIKAR DLRGKKKEEL LKQLDDLKVE LSQLRVAKVT GGAASKLSKI RVVRKSIARV
LTVINQQTQKE NLRKFYKGGK YKPLDLRPPK TRAMRRRLNK HEENLTKKKQ QRKERLYPLR KYAVKA

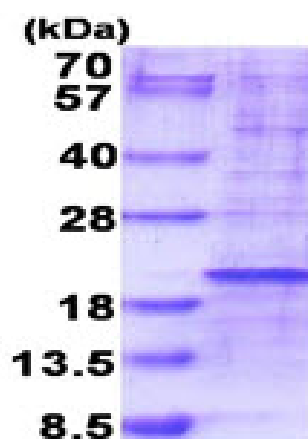
General References

Odintsova T.I., et al. (2003) J. Protein Chem. 22:249-258

Choudhary C., et al. (2009) Science. 325:834-840

DATA

SDS-PAGE



3ug by SDS-PAGE under reducing condition and visualized by coomassie blue stain.

15% SDS-PAGE (3ug)