

Recombinant human CSK protein

Catalog Number: ATGP2842

PRODUCT INFORMATION

Expression system

E.coli

Domain

1-450aa

UniProt No.

P41240

NCBI Accession No.

NP_001120662

Alternative Names

Tyrosine-protein kinase CSK, Tyrosine-protein kinase CSK, C-Src kinase, Protein-tyrosine kinase CYL, Tyrosine protein kinase CSK

PRODUCT SPECIFICATION

Molecular Weight

53.1 kDa (473aa)

Concentration

0.5mg/ml (determined by Bradford assay)

Formulation

Liquid in. Phosphate-Buffered Saline (pH 7.4) containing 20% glycerol, 1mM DTT

Purity

> 95% by SDS-PAGE

Tag

His-Tag

Application

SDS-PAGE

Storage Condition

Can be stored at +2C to +8C for 1 week. For long term storage, aliquot and store at -20C to -80C. Avoid repeated freezing and thawing cycles.

BACKGROUND

Description

CSK is a tyrosine-protein kinase CSK that plays an important role in the regulation of cell growth, differentiation, migration and immune response. Suppresses signaling by various surface receptors, including T-cell receptor (TCR) and B-cell receptor (BCR) by phosphorylating and maintaining inactive several positive effectors such as FYN or LCK.. Recombinant human CSK protein, fused to His-tag at N-terminus, was expressed in E. coli and purified by using conventional chromatography techniques.

Recombinant human CSK protein

Catalog Number: ATGP2842

Amino acid Sequence

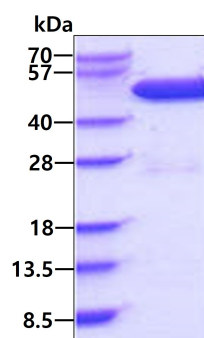
<MGSSHHHHHH SSGLVPRGSH MGS>MSAIQAA WPSGTECIAK YNFHGTAEQD LPFCKGDVLT IVAVTKDPNW
YKAKNKVGRE GIIPANYVQK REGVKAGTKL SLMPWFHGKI TREQAERLLY PPETGLFLVR ESTNYPGDYT LCVSCDGKVE
HYRIMYHASK LSIDEEVYFE NLMQLVEHYT SDADGLCTRL IKPKVMETV AAQDEFYRSG WALNMKELKL LQTIGKGEFG
DVMLGDYRGN KVAVKCIKND ATAQAFLAEA SVMTQLRHSN LVQLLGVIVE EKGGLYIVTE YMAKGSLVDY LRSRGRSVLG
GDCLLKFSLD VCEAMEYLEG NNFVHRDLAA RNVLVSEDNV AKVSDFGLTK EASSTQDTGK LPVKWTAPEA LREKKFSTKS
DVWSFGILLW EIYSFGRVPY PRIPLKDVVP RVEKGYKMDA PDGCPPAVYE VMKNCWHLDA AMRPSFLQLR EQLEHIKTHE
LHL

General References

Braeuninger A., et al. (1991) Proc. Natl. Acad. Sci. u.S.A. 88:10411-10415

DATA

SDS-PAGE



3ug by SDS-PAGE under reducing condition and visualized by coomassie blue stain.