

Recombinant human KLHDC8B protein

Catalog Number: ATGP2864

PRODUCT INFORMATION

Expression system

E.coli

Domain

1-354aa

UniProt No.

Q8IXV7

NCBI Accession No.

NP_775817

Alternative Names

Kelch domain-containing protein 8B, FP17659, Kelch domain containing protein 8B, MGC35097

PRODUCT SPECIFICATION

Molecular Weight

40.1 kDa (377aa)

Concentration

0.5mg/ml (determined by Bradford assay)

Formulation

Liquid in. Phosphate-Buffered Saline (pH 7.4) containing 10% glycerol

Purity

> 85% by SDS-PAGE

Tag

His-Tag

Application

SDS-PAGE, Denatured

Storage Condition

Can be stored at +2C to +8C for 1 week. For long term storage, aliquot and store at -20C to -80C. Avoid repeated freezing and thawing cycles.

BACKGROUND

Description

KLHDC8B forms a distinct beta-propeller protein structure of kelch domains allowing for protein-protein interactions. Mutations in KLHDC8B have been associated with Hodgkin lymphoma. Recombinant human KLHDC8B protein, fused to His-tag at N-terminus, was expressed in E. coli.

Amino acid Sequence

<MGSSHHHHHH SGLVPRGSH MGS>MSAGGGR AFAWQVFPPM PTCRVYGTVA HQDGHLLVLG GCGRAGLPLD
TAETLDMASH TWLALAPLPT ARAGAAAVVL GKQVLVGGV DEVQSPVA AV EAFLMDEGRW ERRATLPQAA

Recombinant human KLHDC8B protein

Catalog Number: ATGP2864

MGVATVERDG MYYALGGMGP DTAPQAQVRV YEPRRDCWLS LPSMPTPCYG ASTFLHGSKI YVLGGRQGKL PVTAFEAFDL
EARTWTRHPS LPSRRAFAGC AMAEGSVFSL GGLQQPGPHN FYSRPHFVNT VEMFDLEHGS WTKLPRSLRM RDKRADFVVG
SLGGHIVAIG GLGNQPCPLG SVESFSLARR RWEALPAMPT ARCSCSSLQA GPRLFVIGGV AQGPSQAVEA LCLRDGV

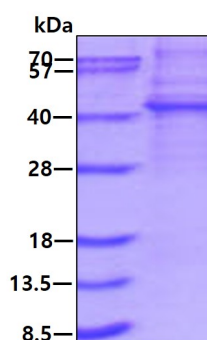
General References

Wan D., et al (2004). Proc. Natl. Acad. Sci. u.S.A. 101:15724-15729

Salipante S.J., et al (2009). Proc. Natl. Acad. Sci. u.S.A. 106:14920-14925

DATA

SDS-PAGE



3 μ g by SDS-PAGE under reducing condition and visualized by coomassie blue stain.