

# Recombinant human SBEM/MUCL1 protein

Catalog Number: ATGP2880

## PRODUCT INFORMATION

---

### Expression system

E.coli

### Domain

21-90aa

### UniProt No.

Q96DR8

### NCBI Accession No.

NP\_477521

### Alternative Names

Mucin-like protein 1, Protein BS106, Small breast epithelial mucin

## PRODUCT SPECIFICATION

---

### Molecular Weight

9.3 kDa (93aa) confirmed by MALDI-TOF (Molecular weight on SDS-PAGE will appear higher)

### Concentration

0.25mg/ml (determined by BCA assay)

### Formulation

Liquid in. Phosphate-Buffered Saline (pH 7.4) containing 10% glycerol

### Purity

> 85% by SDS-PAGE

### Tag

His-Tag

### Application

SDS-PAGE

### Storage Condition

Can be stored at +2C to +8C for 1 week. For long term storage, aliquot and store at -20C to -80C. Avoid repeated freezing and thawing cycles.

## BACKGROUND

---

### Description

MuCL1 may play a role as marker for the diagnosis of metastatic breast cancer. This protein is expressed in mammary, salivary glands and prostate. Recombinant human MuCL1 protein, fused to His-tag at N-terminus, was expressed in E. coli and purified by using conventional chromatography techniques.

### Amino acid Sequence

MGSSHHHHHH SGLVPRGSH MGSNPTTAAP ADTYPATGPA DDEAPDAETT AAATTATTAA PTTATTAAS TARKDIPVLP  
KWVGDLPNGR VCP

# Recombinant human SBEM/MUCL1 protein

Catalog Number: ATGP2880

## General References

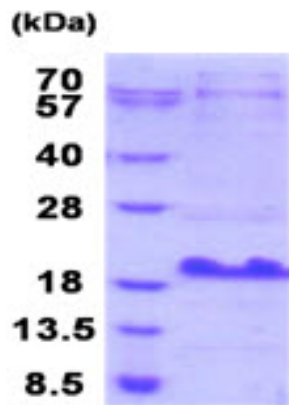
Miksicek R.J., et al (2002). Cancer Res. 62:2736-2740

Colpitts T.L., et al (2002). Tumor Biol. 23:263-278

## DATA

---

### SDS-PAGE



3ug by SDS-PAGE under reducing condition and visualized by coomassie blue stain.

15% SDS-PAGE (3ug)