

Recombinant human HDGFL1 protein

Catalog Number: ATGP2881

PRODUCT INFORMATION

Expression system

E.coli

Domain

1-251aa

UniProt No.

Q5TGJ6

NCBI Accession No.

NP_612641

Alternative Names

Hepatoma-derived growth factor-like protein 1, Hepatoma-derived growth factor-like protein 1, DJ309H15.1, PWWP1

PRODUCT SPECIFICATION

Molecular Weight

29.6 kDa (274aa) confirmed by MALDI-TOF (Molecular weight on SDS-PAGE will appear higher)

Concentration

0.25mg/ml (determined by Bradford assay)

Formulation

Liquid in. Phosphate-Buffered Saline (pH 7.4) containing 10% glycerol

Purity

> 95% by SDS-PAGE

Tag

His-Tag

Application

SDS-PAGE

Storage Condition

Can be stored at +2C to +8C for 1 week. For long term storage, aliquot and store at -20C to -80C. Avoid repeated freezing and thawing cycles.

BACKGROUND

Description

HDGFL1 belongs to the HDGF family and contains 1 PWWP domain. Recombinant human HDGFL1 protein, fused to His-tag at N-terminus, was expressed in E. coli and purified by using conventional chromatography techniques.

Amino acid Sequence

<MGSSHHHHHH SSGLVPRGSH MGS>MSAYGMP MYKSGDLVFA KLKGYAHWPA RIEHMTQPNR YQVFFFGTHE
TAF LSPKRLF PYKECKEKFQ KPNKRRGFSA GLWEIENNPT VQASDCPLAS EKGSGDGPWP EPEAAEGDED KPTHAGGGGD

Recombinant human HDGFL1 protein

Catalog Number: ATGP2881

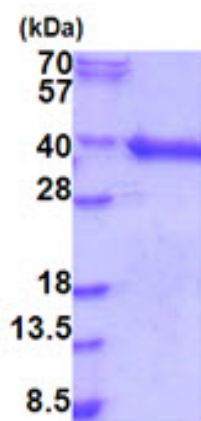
ELGKPDDDKP TEEKGPLKR SAGDPPEDAP KRPKEAAPDQ EEEAEAERAA EAERAAAAAA ATAVDEESPF LVAVENGSA
SEPGLVCEPP QPEEEELREE EVADEEASQE WHAEAPGGGD RDSL

General References

Ota T., et al. (2004) Nat. Genet. 36:40-45

DATA

SDS-PAGE



3ug by SDS-PAGE under reducing condition and visualized by coomassie blue stain.

15% SDS-PAGE (3ug)