

# Recombinant human ING1 protein

Catalog Number: ATGP2891

## PRODUCT INFORMATION

---

**Expression system**

E.coli

**Domain**

1-279aa

**UniProt No.**

Q9UK53

**NCBI Accession No.**

NP\_937862

**Alternative Names**

Inhibitor of growth protein 1, Inhibitor of growth protein 1, p24ING1c, p33, p33ING1, p33ING1b, p47, p47ING1a

## PRODUCT SPECIFICATION

---

**Molecular Weight**

34.3 kDa (302aa)

**Concentration**

1mg/ml (determined by Bradford assay)

**Formulation**

Liquid in. 20mM Tris-HCl buffer (pH 8.0) containing 10% glycerol

**Purity**

&gt; 90% by SDS-PAGE

**Tag**

His-Tag

**Application**

SDS-PAGE, Denatured

**Storage Condition**

Can be stored at +2C to +8C for 1 week. For long term storage, aliquot and store at -20C to -80C. Avoid repeated freezing and thawing cycles.

## BACKGROUND

---

**Description**

ING1 is a tumor suppressor protein that can induce cell growth arrest and apoptosis. This protein is a nuclear protein that physically interacts with the tumor suppressor protein TP53 and is a component of the p53 signaling pathway. Reduced expression and rearrangement of this gene have been detected in various cancers. Multiple alternatively spliced transcript variants encoding distinct isoforms have been reported. Recombinant human ING1 protein, fused to His-tag at N-terminus, was expressed in E. coli and purified by using conventional chromatography techniques.

# Recombinant human ING1 protein

Catalog Number: ATGP2891

## Amino acid Sequence

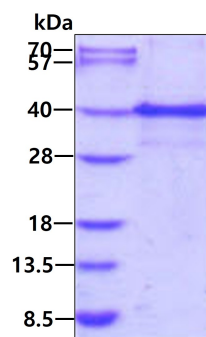
<MGSSHHHHHH SSGLVPRGSH MGS>MLSPANG EQLHLVNYVE DYLDIESLP FDLQRNVSLM REIDAKYQEI  
LKELDECYER FSRETDGAQK RRMLHCVQRA LIRSQELGDE KIQIVSQMVE LVENRTRQVD SHVELFEAQQ ELGDTAGNSG  
KAGADRPKGE AAAQADKPNS KRSRRQRNNE NRENASSNHD HDDGASGTPK EKKAKTSKKK KRSKAKAERE ASPADLPIDP  
NEPTYCLCNQ VSYGEMIGCD NDECPIEWFH FSCVGLNHKP KGKWYCPKCR GENEKTMKA LEKSKKERAY NR

## General References

Garkavtsev I.A., et al. (1998) Nature 391:295-298.  
Shi X., et al. (2006) Nature 442:96-99.

## DATA

### SDS-PAGE



3 $\mu$ g by SDS-PAGE under reducing condition and visualized by coomassie blue stain.