

Recombinant human HDDC2 protein

Catalog Number: ATGP2896

PRODUCT INFORMATION

Expression system

E.coli

Domain

1-204aa

UniProt No.

Q7Z4H3

NCBI Accession No.

NP_057147

Alternative Names

HD domain-containing protein 2, HD domain-containing protein 2, C6orf74, CGI-130, dj16705.2, NS5ATP2

PRODUCT SPECIFICATION

Molecular Weight

25.8 kDa (227aa) confirmed by MALDI-TOF

Concentration

1mg/ml (determined by Bradford assay)

Formulation

Liquid in. Phosphate-Buffered Saline (pH 7.4) containing 10% glycerol,

Purity

> 95% by SDS-PAGE

Tag

His-Tag

Application

SDS-PAGE

Storage Condition

Can be stored at +2C to +8C for 1 week. For long term storage, aliquot and store at -20C to -80C. Avoid repeated freezing and thawing cycles.

BACKGROUND

Description

HDDC2 (HD domain-containing protein 2), also known as hepatitis C virus NS5A-transactivated protein 2, is an enzyme that contains one HD domain and belongs to the HDDC2 family. It is predicted to exhibit phosphohydrolase activity. This protein is suggested to participate in nucleic acid metabolism, signal transduction and possibly other functions in bacteria, archaea and eukaryotes. The HD domain consists of highly conserved residues, specifically histidines or aspartates. Porphyria cutanea tarda, Parkinson's disease and Stickler syndrome have all been associated with this protein. Recombinant human HDDC2 protein, fused to His-

Recombinant human HDDC2 protein

Catalog Number: ATGP2896

tag at N-terminus, was expressed in E. coli and purified by using conventional chromatography.

Amino acid Sequence

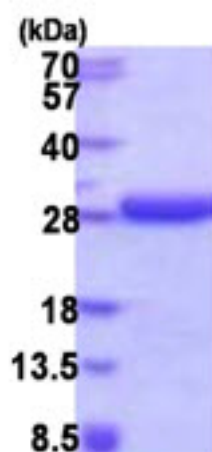
MGSSHHHHHHH SSGLVPRGSH MGSMASVSSA TFSGHGARS LQFLRLVGQL KRVPR TGWVY RNVQR PESVS
DHMYRMAVMA MVIKDDRLNK DRCVRLALVH DMAECIVGDI APADNIPKEE KHRREEEAMK QITQLLPEDL RKELYELWEE
YETQSSAEAK FVKQLDQCEM ILQASEYEDL EHKPGRLQDF YDSTAGKFNH PEIVQLVSEL EAERSTNIAA AASEPHS

General References

Brunner, H.G. et al. (1994) Hum. Mol. Genet. 3:1561-1564.
Aravind, L. et al. (1998) Trends Biochem. Sci. 23:469-472.

DATA

SDS-PAGE



3ug by SDS-PAGE under reducing condition and visualized by coomassie blue stain.

15% SDS-PAGE (3ug)