

Recombinant human ELAVL2 protein

Catalog Number: ATGP2925

PRODUCT INFORMATION

Expression system

E.coli

Domain

1-346aa

UniProt No.

Q12926

NCBI Accession No.

NP_001164668

Alternative Names

ELAV-like protein 2, ELAV-like protein 2, HEL-N1, HELN1, HuB

PRODUCT SPECIFICATION

Molecular Weight

40.4 kDa (369aa) confirmed by MALDI-TOF

Concentration

0.5mg/ml (determined by Bradford assay)

Formulation

Liquid in. Phosphate-Buffered Saline (pH 7.4) containing 30% glycerol, 1mM DTT

Purity

> 85% by SDS-PAGE

Tag

His-Tag

Application

SDS-PAGE

Storage Condition

Can be stored at +2C to +8C for 1 week. For long term storage, aliquot and store at -20C to -80C. Avoid repeated freezing and thawing cycles.

BACKGROUND

Description

ELAVL2 is a neural-specific RNA-binding protein that is known to bind to several 3' uTRs, including its own and also that of FOS and ID. This protein may recognize a GAAA motif in the RNA. Three transcript variants encoding two different isoforms have been found for this gene. Recombinant human ELAVL2 protein, fused to His-tag at N-terminus, was expressed in E. coli and purified by using conventional chromatography techniques.

Amino acid Sequence

MGSSHHHHHHH SGLVPRGSH MGSMETQLSN GPTCNNTANG PTTINNNCSS PVDSGNTEDS KTNLIVNYLP QNMTQEELKS

Recombinant human ELAVL2 protein

Catalog Number: ATGP2925

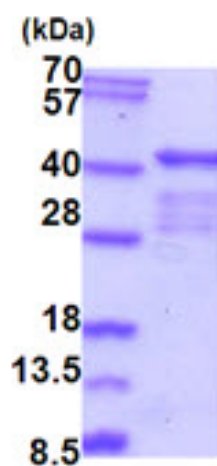
LFGSIGEIES CKLVRDKITG QSLGYGFVNY IDPKDAEKAI NTLNGLRLQT KTIKVSYPARP SSASIRDANL YVSGLPKMTMT
QKELEQLFSQ YGRIITSRIL VDQVTGISRG VGFIRFDKRI EAEEAIKGLN GQKPPGATEP ITVKFANNPS QKTNQAILSQ
LYQSPNRRYP GPLAQQAQRF RFSPMTIDGM TSLAGINIPG HPGTGWCIFV YNLAPDADES ILWQMFGPFG AVTNVKVIRD
FNTNKCKGFG FVTMTNYDEA AMAIASLNGY RLGDRVLQVS FKTNKTHKA

General References

Joeson L., et al. (2007) Mol. Cell. Proteomics 6:798-811.

DATA

SDS-PAGE



3ug by SDS-PAGE under reducing condition and visualized by coomassie blue stain.

15% SDS-PAGE (3ug)