

# Recombinant human SCO1 protein

Catalog Number: ATGP2928

## PRODUCT INFORMATION

---

### Expression system

E.coli

### Domain

132-301aa

### UniProt No.

O75880

### NCBI Accession No.

NP\_004580

### Alternative Names

Protein SCO1 homolog mitochondrial, Protein SCO1 homolog, mitochondrial, SCOD1

## PRODUCT SPECIFICATION

---

### Molecular Weight

20.5 kDa (179aa) confirmed by MALDI-TOF

### Concentration

1mg/ml (determined by Bradford assay)

### Formulation

Liquid in. Phosphate-Buffered Saline (pH 7.4) containing 10% glycerol, 1mM DTT

### Purity

> 95% by SDS-PAGE

### Tag

His-Tag

### Application

SDS-PAGE

### Storage Condition

Can be stored at +2C to +8C for 1 week. For long term storage, aliquot and store at -20C to -80C. Avoid repeated freezing and thawing cycles.

## BACKGROUND

---

### Description

Mammalian cytochrome c oxidase (COX) catalyzes the transfer of reducing equivalents from cytochrome c to molecular oxygen and pumps protons across the inner mitochondrial membrane. In yeast, 2 related COX assembly genes, SCO1 and SCO2 (synthesis of cytochrome c oxidase), enable subunits 1 and 2 to be incorporated into the holoprotein. This gene is the human homolog to the yeast SCO1 gene. Recombinant human SCO1 protein, fused to His-tag at C-terminus, was expressed in E. coli and purified by using conventional chromatography techniques.

# Recombinant human SCO1 protein

Catalog Number: ATGP2928

## Amino acid Sequence

MGKPLLGGPF SLTTHHTGERK TDKDYLQWL LIYFGFTHCP DVCPEELEKM IQVVDEIDSI TTLPDLTPLF ISIDPERDTK  
EAIANYVKEF SPKLVGLTGT REEVDQVARA YRVYYSPGPK DEDEDYIVDH TIIMYLIGPD GEFLDYFGQN KRKGEIAASI  
ATHMRPYRKK SLEHHHHHH

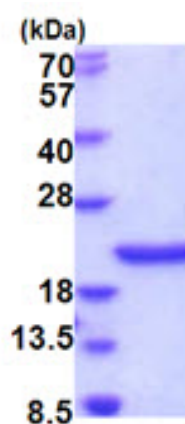
## General References

Petruzzella V., et al. (1999) Genomics. 54 (3): 494-504.

## DATA

---

### SDS-PAGE



3ug by SDS-PAGE under reducing condition and visualized by coomassie blue stain.

15% SDS-PAGE (3ug)