

# Recombinant human ERGIC3 protein

Catalog Number: ATGP2930

## PRODUCT INFORMATION

---

### Expression system

E.coli

### Domain

47-341aa

### UniProt No.

Q9Y282

### NCBI Accession No.

NP\_057050

### Alternative Names

Endoplasmic reticulum-Golgi intermediate compartment protein3, Endoplasmic reticulum-Golgi intermediate compartment protein3, C20orf47, CGI-54, dj47704.2, Erv46

## PRODUCT SPECIFICATION

---

### Molecular Weight

36.1 kDa (318aa) confirmed by MALDI-TOF

### Concentration

1mg/ml (determined by Bradford assay)

### Formulation

Liquid in. Phosphate-Buffered Saline (pH 7.4) containing 10% glycerol, 1mM DTT

### Purity

> 95% by SDS-PAGE

### Tag

His-Tag

### Application

SDS-PAGE

### Storage Condition

Can be stored at +2C to +8C for 1 week. For long term storage, aliquot and store at -20C to -80C. Avoid repeated freezing and thawing cycles.

## BACKGROUND

---

### Description

ERGIC3 belongs to ERGIC family and interacts with ERGIC1/ERGIC32. This protein possibly plays a role in transport between endoplasmic reticulum and Golgi. Recombinant human ERGIC3 protein, fused to His-tag at N-terminus, was expressed in E. coli and purified by using conventional chromatography techniques.

### Amino acid Sequence

<MGSSHHHHHH SGLVPRGSH MGS>QYYLTTE VHPELYVDKS RGDCLKINID VLFPHMPCAY LSIDAMDVAG

# Recombinant human ERGIC3 protein

Catalog Number: ATGP2930

EQQLDVEHNL FKQRLDKDGI PVSSEAERHE LGKVEVTVFD PDSLDPDRCE SCYGAEAEDI KCCNTCEDVR EAYRRRGWAF  
KNPDTIEQCR REGFSQKMQE QKNEGCQVYG FLEVNVK VAGN FHFAPGKSFQ QSHVHVHDLQ SFGLDNINMT HYIQHLSFGE  
DYPGIVNPLD HTNVTAPQAS MMFQYFVKVV PTVYMKVDGE VLR TNQFSVT RHEKVANGLL GDQGLPGVFV LYELSPMMVK  
LTEKHRSF

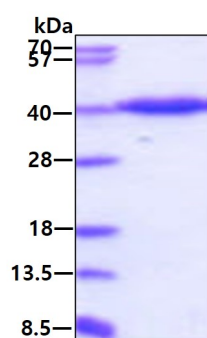
## General References

Scanlan M.J., et al. (2001) Cancer Immun. 1:4-4

## DATA

---

### SDS-PAGE



3ug by SDS-PAGE under reducing condition and visualized by coomassie blue stain.