

Recombinant human IL-12R beta/IL12RB1 protein

Catalog Number: ATGP2945

PRODUCT INFORMATION

Expression system

E.coli

Domain

1-545aa

UniProt No.

P42701

NCBI Accession No.

NP_005526

Alternative Names

Interleukin 12 receptor subunit beta 1, IL-12 receptor subunit beta-1, IL-12R subunit beta-1, IL-12R-beta-1, IL-12 receptor beta component, IL12R, IL12RB, CD212

PRODUCT SPECIFICATION

Molecular Weight

62.6 kDa (568aa)

Concentration

0.25mg/ml (determined by Bradford assay)

Formulation

Liquid in. 20mM Tris-HCl buffer (pH 8.0) containing 10% glycerol

Purity

> 90% by SDS-PAGE

Tag

His-Tag

Application

SDS-PAGE, Denatured

Storage Condition

Can be stored at +2C to +8C for 1 week. For long term storage, aliquot and store at -20C to -80C. Avoid repeated freezing and thawing cycles.

BACKGROUND

Description

IL12RB1 is a type I transmembrane protein that belongs to the hemopoietin receptor superfamily. This protein binds to interleukine 12 (IL12) with a low affinity, and is thought to be a part of IL12 receptor complex. This protein forms a disulfide-linked oligomer, which is required for its IL12 binding activity. The coexpression of this and IL12RB2 proteins was shown to lead to the formation of high-affinity IL12 binding sites and reconstitution of IL12 dependent signaling. Recombinant human IL12RB1 protein, fused to His-tag at N-terminus, was expressed

Recombinant human IL-12R beta/IL12RB1 protein

Catalog Number: ATGP2945

in E. coli.

Amino acid Sequence

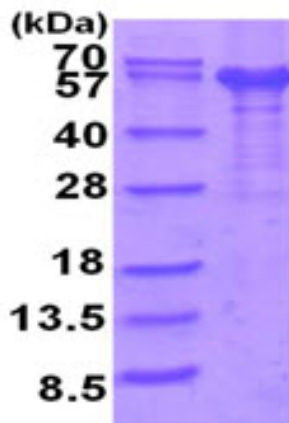
MGSSHHHHHHH SSSLVPRGSH MGSMEPLVTW VVPLLFLFLL SRQGAACRTS ECCFQDPPYP DADSGSASGP RDLRCYRISS
DRYECSWQYE GPTAGVSHFL RCCLSSGRCC YFAAGSATRL QFSDQAGVSV LYTVTLWVES WARNQTEKSP EVTLQLYNSV
KYEPPLGDIK VSKLAGQLRM EWETPDNQVG AEVQFRH RTP SSPWKLGDCG PQDDDTESCL CPLEMNVAQE FQLRRRQLGS
QGSSWSKWSS PVCVPPENPP QPQVRFSVEQ LGQDGRRRLT LKEQPTQLEL PEGCQGLAPG TEVTYRLQLH MLSCPCKAKA
TRTLHLGKMP YLSGAAYNVA VISSNQFGPG LNQTWHIPAD THTEPVALNI SVGTNGTTMY WPARAQSMY CIEWQPVGQD
GGLATCSLTA PQDPDPAGMA TYSWSRESGA MGQEKCYYIT IFASAHPEKL TLWSTVLSTY HFGGNASAAG TPHHVSVKNH
SLDSVSDWA PSLSTCPGV LKEYVVRCD EDSKQVSEHP VQPTETQVTL SGLRAGVAYT VQVRADTAWL RGVWSQPQRF
SIEVQVSD

General References

Li X., et al. (2013) . Allergy Clin. Immunol. 132 (2), 313-320
Giatrakos S, et al. (2013) Cytokine 62 (2), 297-301

DATA

SDS-PAGE



3ug by SDS-PAGE under reducing condition and visualized by coomassie blue stain.

15% SDS-PAGE (3ug)