

Recombinant human MDL-1/CLEC5A protein

Catalog Number: ATGP2946

PRODUCT INFORMATION

Expression system

E.coli

Domain

28-188aa

UniProt No.

Q9NY25

NCBI Accession No.

NP_037384

Alternative Names

C-type lectin domain family 5 member A, C-type lectin domain family 5 member A isoform 1, CLEC5A, CLECSF5, MDL-1, MDL1, Macrophage lectin 2

PRODUCT SPECIFICATION

Molecular Weight

20.8 kDa (184aa)

Concentration

0.25mg/ml (determined by Bradford assay)

Formulation

Liquid in. 20mM Tris-HCl buffer (pH 8.0) containing 10% glycerol

Purity

> 80% by SDS-PAGE

Tag

His-Tag

Application

SDS-PAGE, Denatured

Storage Condition

Can be stored at +2C to +8C for 1 week. For long term storage, aliquot and store at -20C to -80C. Avoid repeated freezing and thawing cycles.

BACKGROUND

Description

CLEC5A, also known as C-type lectin superfamily member 5 (CLECSF5) and myeloid DAP12-associating lectin 1 (MDL1), is a C-type lectin. It appears to be a member of a significant myeloid lineage activating pathway. This protein functions as a positive regulator of osteoclastogenesis and regulates inflammatory responses. Recombinant human CLEC5A protein, fused to His-tag at N-terminus, was expressed in E. coli.

Recombinant human MDL-1/CLEC5A protein

Catalog Number: ATGP2946

Amino acid Sequence

MGSSHHHHHH SSSLVPRGSH MGSPQIFNKS NDGFTTTRSY GTVSQIFGSS SPSPNGFITT RSYGTVCPKD WEFYQARCFF
LSTSESSWNE SRDFCKGKGS TLAI VNTPEK LKFLQDITDA EK YFIGLIYH REEKRW RWIN NSVFNGNVTN QNQNFNCATI
GLTKTFDAAS CDISYRRICE KNAK

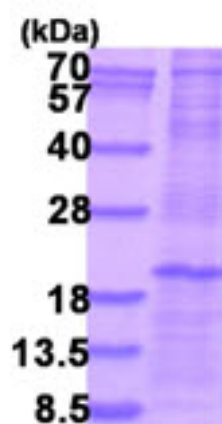
General References

Bakker AB. et al. (1999) Proc Natl Acad Sci U S A. 96:9792-9796.

Chen ST. et al. (2008) Nature. 453:672-676.

DATA

SDS-PAGE



3ug by SDS-PAGE under reducing condition and visualized by coomassie blue stain.

15% SDS-PAGE (3ug)