

# Recombinant human FGG protein

Catalog Number: ATGP2953

## PRODUCT INFORMATION

---

### Expression system

E.coli

### Domain

27-437aa

### UniProt No.

P02679

### NCBI Accession No.

NP\_000500

### Alternative Names

Fibrinogen gamma chain isoform gamma-A, Fibrinogen gamma chain

## PRODUCT SPECIFICATION

---

### Molecular Weight

48.9 kDa (434aa) confirmed by MALDI-TOF

### Concentration

0.5mg/ml (determined by Bradford assay)

### Formulation

Liquid in. Phosphate-Buffered Saline (pH 7.4) containing 10% glycerol, 1mM DTT

### Purity

> 90% by SDS-PAGE

### Tag

His-Tag

### Application

SDS-PAGE

### Storage Condition

Can be stored at +2C to +8C for 1 week. For long term storage, aliquot and store at -20C to -80C. Avoid repeated freezing and thawing cycles.

## BACKGROUND

---

### Description

FGG, also Known as Fibrinogen gamma chain isoform gamma-A. FGG is the gamma component of fibrinogen, a blood-borne glycoprotein comprised of three pairs of nonidentical polypeptide chains. Following vascular injury, FGG is cleaved by thrombin to form fibrin which is the most abundant component of blood clots. Recombinant human FGG, fused to His-tag at N-terminus, was expressed in E. coli and purified by using conventional chromatography techniques.

# Recombinant human FGG protein

Catalog Number: ATGP2953

## Amino acid Sequence

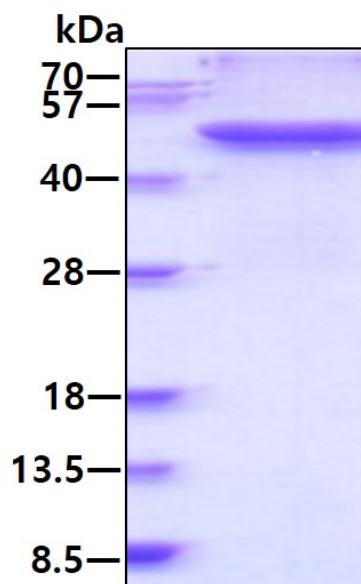
<MGSSHHHHHH SSGLVPRGSH MGS>YVATRDN CCILDERFGS YCPTTCGIAD FLSTYQTKVD KDLQSLEDIL  
HQVENKTSEV KQLIKAIQLT YNPDESSKPN MIDAATLKSR KMLEEIMKYE ASILTHDSSI RYLQEIYNSN NQKIVNLKEK  
VAQLEAQCQE PCKDTVQIHD ITGKDCQDIA NKGAKQSGLY FIKPLKANQQ FLVYCEIDGS GNGWTVFQKR LDGSVDFKKN  
WIQYKEGFGH LSPTGTTEFW LGNEKIHLIS TQSAIPYALR VELEDWNGRT STADYAMFKV GPEADKYRLT YAYFAGGDAG  
DAFDGDFDFD DPSDKFFTSN NGMQFSTWDN DNDKFEGNCA EQDGSWWMN KCHAGHLNGV YYQGGTYSKA  
STPNGYDNGI IWATWKTRWY SMKKTMMKII PFNRLTIGEG QQHHLGGAKQ AGDV

## General References

Abaeva AA., et al. (2013) J. Biol. Chem. 288 (41), 29621-29632

## DATA

### SDS-PAGE



3ug by SDS-PAGE under reducing condition and visualized by coomassie blue stain.