

Recombinant human LRP2BP protein

Catalog Number: ATGP2971

PRODUCT INFORMATION

Expression system

E.coli

Domain

1-347aa

UniProt No.

Q9P2M1

NCBI Accession No.

NP_060879

Alternative Names

LRP2-binding protein, KIAA1325

PRODUCT SPECIFICATION

Molecular Weight

42.2 kDa (370aa) confirmed by MALDI-TOF

Concentration

0.5mg/ml (determined by Bradford assay)

Formulation

Liquid in. Phosphate-Buffered Saline (pH 7.4) containing 20% glycerol, 1mM DTT

Purity

> 95% by SDS-PAGE

Tag

His-Tag

Application

SDS-PAGE

Storage Condition

Can be stored at +2C to +8C for 1 week. For long term storage, aliquot and store at -20C to -80C. Avoid repeated freezing and thawing cycles.

BACKGROUND

Description

LRP2BP also known as LRP2-binding protein. This protein may act as an adapter that regulates LRP2 function, detected in a vesicular staining pattern close to the plasma membrane and throughout the cytoplasm. Recombinant human LRP2BP, fused to His-tag at N-terminus, was expressed in E. coli and purified by using conventional chromatography techniques.

Amino acid Sequence

MGSSHHHHHH SGLVPRGSH MGSMKLTSEK LPKNPFYASV SQYAAKNQKF FQWKKEKTDY THANLVDKAL QLLKERILKG

Recombinant human LRP2BP protein

Catalog Number: ATGP2971

DTLAYFLRGQ LYFEEGWYEE ALEQFEEIKE KDHQATYQLG VMYDGLGTT LDAEKGVDDYM KKILDSPCPK ARHLKFAAAY
NLGRAYYEGK GVKRSNEEAE RLWLIAADNG NPKASVKAQS MLGLYSTKE PKELEKAFYW HSEACGNGNL ESQALGLMY
LYGQIRQDT EAALQCLREA AERGNVYAQG NLVEYYYKMK FFTKCVAFSK RIADYDEVHD IPMIAQVTDC LPEFIGRGMA
MASFYHARCL QLGLGTRDE TTAKHYYSKA CRLNPALADE LHSLLRQRI

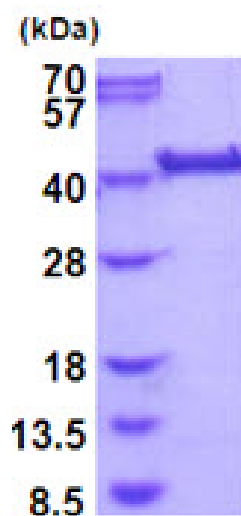
General References

Petersen H.H., et al. (2003) J. Cell Sci. 116:453-461

Stora S., et al. (2009) Eur J Med Genet. 52 (5), 341-343

DATA

SDS-PAGE



3ug by SDS-PAGE under reducing condition and visualized by coomassie blue stain.

15% SDS-PAGE (3ug)