

# Recombinant human IP6K2 protein

Catalog Number: ATGP2975

## PRODUCT INFORMATION

---

### Expression system

E.coli

### Domain

1-426aa

### UniProt No.

Q9UHH9

### NCBI Accession No.

NP\_057375

### Alternative Names

Inositol hexakisphosphate kinase 2 isoform a, IHPK2, PluS

## PRODUCT SPECIFICATION

---

### Molecular Weight

51.3 kDa (446aa)

### Concentration

0.5mg/ml (determined by Bradford assay)

### Formulation

Liquid In. 20mM Tris-HCl buffer (pH8.0) containing 10% Glycerol

### Purity

> 85% by SDS-PAGE

### Tag

His-Tag

### Application

SDS-PAGE, Denatured

### Storage Condition

Can be stored at +2C to +8C for 1 week. For long term storage, aliquot and store at -20C to -80C. Avoid repeated freezing and thawing cycles.

## BACKGROUND

---

### Description

IP6K2 also known as Inositol hexakisphosphate kinase 2, belongs to the inositol IPK family. This protein is likely responsible for the conversion of inositol hexakisphosphate (InsP6) to diphosphoinositol pentakisphosphate (InsP7/PP-InsP5). It may also convert 1, 3, 4, 5, 6-pentakisphosphate (InsP5) to PP-InsP4 and affect the growth suppressive and apoptotic activities of interferon-beta in some ovarian cancers. Recombinant human IP6K2, fused to His-tag at N-terminus, was expressed in E. coli

# Recombinant human IP6K2 protein

Catalog Number: ATGP2975

## Amino acid Sequence

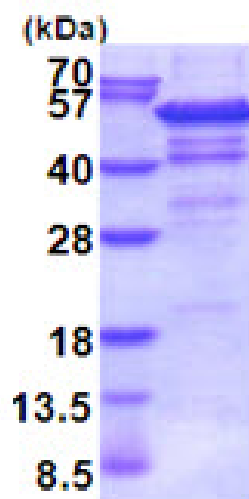
MGSSHHHHHHH SSSLVPRGSH MSPAFRAMDV EPRAKGVLE PFVHQVGGHS CVLRFNETTL CKPLVPREHQ FYETLPAEMR  
KFTPQYKGVV SVRFEEDEDR NLCLIAAYPLK GDHGIVDIVD NSDCEPKSKL LRWTTNKKHH VLETEKTPKD WVRQHRKEEK  
MKSHKLEEEF EWLKKESEVLY YTVEKKGNIS SQLKHYNPWS MKCHQQQLQR MKENAKHRNQ YKFILLENLT SRYEVPCLVD  
LKMGRQHG DASEEKAANQ IRKCQOSTSA VIGVRVCGMQ VYQAGSGQLM FMNKYHGRKL SVQGFKEALF  
QFFHNGRYLR RELLGPVLKK LTELKAVLER QESYRFYSSS LLVIYDGKER PEVVLDSAE DLEDLSEESA DESAGAYAYK  
PIGASSVDVR MIDFAHTTCR LYGEDTVVHE GQDAGYIFGL QSLIDIVTEI SEESGE

## General References

Fairfax BP., et al. (2012) Nat. Genet. 44 (5), 502-510

## DATA

### SDS-PAGE



3ug by SDS-PAGE under reducing condition and visualized by coomassie blue stain.

15% SDS-PAGE (3ug)