

# Recombinant human Reg4 protein

Catalog Number: ATGP2990

## PRODUCT INFORMATION

---

### Expression system

E.coli

### Domain

23-158aa

### UniProt No.

Q9BYZ8

### NCBI Accession No.

NP\_114433

### Alternative Names

Regenerating islet-derived protein 4 isoform 1, GISP, RELP, REG-IV

## PRODUCT SPECIFICATION

---

### Molecular Weight

17.5 kDa (152aa)

### Concentration

1mg/ml (determined by Bradford assay)

### Formulation

Liquid in. 20mM Tris-HCl buffer (pH 8.0) containing 10% glycerol

### Purity

> 85% by SDS-PAGE

### Tag

T7-Tag

### Application

SDS-PAGE, Denatured

### Storage Condition

Can be stored at +2C to +8C for 1 week. For long term storage, aliquot and store at -20C to -80C. Avoid repeated freezing and thawing cycles.

## BACKGROUND

---

### Description

REG4 also known as Regenerating islet-derived protein 4. This protein is calcium-independent lectin displaying mannose-binding specificity and able to maintain carbohydrate recognition activity in an acidic environment. It may be involved in inflammatory and metaplastic responses of the gastrointestinal epithelium. Recombinant human REG4, fused to T7-tag at N-terminus, was expressed in E. coli.

### Amino acid Sequence

<MASMTGGQQM GRGSHM>DIIM RPSCAPGWFY HKSNCYGYFR KLRNWSDAEL ECQSYGNGAH LASILSLKEA

# Recombinant human Reg4 protein

Catalog Number: ATGP2990

STIAEYISGY QRSQPIWIGL HDPQKRQQWQ WIDGAMYLYR SWSGKSMGGN KHCAEMSSNN NFLTWSSNEC NKRQHFLCKY  
RP

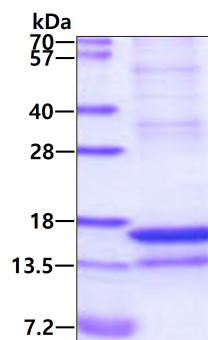
## General References

Strausberg R.L., et al. (2000) Proc. Natl. Acad. Sci. u.S.A. 99 (26): 16899-903

## DATA

---

### SDS-PAGE



3ug by SDS-PAGE under reducing condition and visualized by coomassie blue stain.