

Recombinant human CYP2E1 protein

Catalog Number: ATGP2993

PRODUCT INFORMATION

Expression system

E.coli

Domain

29-493aa

UniProt No.

P05181

NCBI Accession No.

NP_000764.1

Alternative Names

Cytochrome P450 2E1, CPE1, CYP2E, P450-J, P450C2E

PRODUCT SPECIFICATION

Molecular Weight

56.2 kDa (488aa)

Concentration

0.5mg/ml (determined by Bradford assay)

Formulation

Liquid in. 20mM Tris-HCl buffer (pH 8.0) containing 10% glycerol

Purity

> 80% by SDS-PAGE

Tag

His-Tag

Application

SDS-PAGE, Denatured

Storage Condition

Can be stored at +2C to +8C for 1 week. For long term storage, aliquot and store at -20C to -80C. Avoid repeated freezing and thawing cycles.

BACKGROUND

Description

CYP2E1 also known as Cytochrome P450 2E1 (abbreviated CYP2E1, EC 1. 14. 13. n7), is member of the cytochrome P450 mixed-function oxidase system that involved in the metabolism of xenobiotics in the body. While it is involved in the oxidative metabolism of a small range of substrates (mostly small polar molecules), there are many important drug interactions mediated by CYP2E1. Recombinant human CYP2E1, fused to His-tag at N-terminus, was expressed in E. coli.

Recombinant human CYP2E1 protein

Catalog Number: ATGP2993

Amino acid Sequence

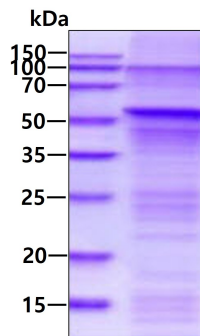
<MGSSHHHHHH SSGLVPRGSH MGS>SWNLPPG PFPLPIIGNL FQLELKNIPK SFTRLAQRFG PVFTLYVGSQ
RMVVMHGYKA VKEALLDYKD EFSGRGDLPA FFAHRDRGII FNNGPTWKDI RRFSLTTLRN YGMGKQGNES RIQREAHFLL
EALRKTQGQP FDPTFLIGCA PCNVIADILF RKHFDYNDEK FLRLMYLFNE NFHLLSTPWL QLYNNFPSFL HYLPGSHRKV
IKNVAEVKEY VSERVKEHHQ SLDPNCPRDL TDCLLVEMEK EKHSAERLYT MDGITVTVDL LFFAGTETTS TTLRYGLLIL
MKYPEIEEKL HEEIDRVIGP SRIPAIDRQ EMPYMDAVVH EIQRFITLVP SNLPHEATRD TIFRGYLIPK GTVVVPTLDS
VLYDNQEFPD PEKFKPEHFL NENKFKYSD YFKPFSTGKR VCAGEGLARM ELFLLLCAIL QHFNLKPLVD PKDIDLSPH
IGFGCIPPRY KLCVIPRS

General References

Miller DN., et al. (1965) Ann NY Acad Sci, 119 (3): 957-973.

DATA

SDS-PAGE



3ug by SDS-PAGE under reducing condition and visualized by coomassie blue stain.