

# Recombinant human PCPE-1 protein

Catalog Number: ATGP2996

## PRODUCT INFORMATION

---

### Expression system

E.coli

### Domain

26-449aa

### UniProt No.

Q15113

### NCBI Accession No.

NP\_002584

### Alternative Names

Procollagen C-endopeptidase enhancer 1, PCPE, PCPE-1, PCPE1

## PRODUCT SPECIFICATION

---

### Molecular Weight

47.9 kDa (447aa)

### Concentration

1mg/ml (determined by Bradford assay)

### Formulation

Liquid in. 20mM Tris-HCl buffer (pH 8.0) containing 10% glycerol

### Purity

> 85% by SDS-PAGE

### Tag

His-Tag

### Application

SDS-PAGE, Denatured

### Storage Condition

Can be stored at +2C to +8C for 1 week. For long term storage, aliquot and store at -20C to -80C. Avoid repeated freezing and thawing cycles.

## BACKGROUND

---

### Description

PCOLCE also known as procollagen C-endopeptidase enhancer 1. PCOLCE binds to the C-terminal propeptide of type I procollagen and enhances procollagen C-proteinase activity and C-terminal processed part of PCPE (CT-PCPE) may have a metalloproteinase inhibitory activity. Recombinant human PCOLCE, fused to His-tag at N-terminus, was expressed in E. coli

### Amino acid Sequence

MGSSHHHHHHH SGLVPRGSH MGSQTPNYTR PVFLCGGDVK GESGYVASEG FPNLYPPNKE CIWTITVPEG QTVSLSFRVF

# Recombinant human PCPE-1 protein

Catalog Number: ATGP2996

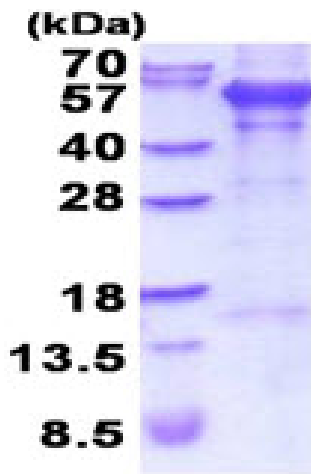
DLELHPACRY DALEVFAGSG TSGQRLGRFC GTFRPAPLVA PGNQVTLRMT TDEGTGGRGF LLWYSGRATS GTEHQFCGGR  
LEKAQGLTT PNWPESDYPP GISCSWHIIA PPDQVIALTF EKFDLEPDTY CRYDSVSVFN GAVSDDSRRL GKFCGDAVPG  
SISSEGNELL VQFVSDLSVT ADGFSASYKT LPRGTAKGQ GPGPKRGTEP KVKLPPKSQP PEKTEESPSA PDAPTCPKQC  
RRTGTLQSNF CASSLVVTAT VKSMVREPG E GLAVTVSLIG AYKTGGLDLP SPPTGASLKF YVPCKQCPM KKGVSYLLMG  
QVEENRGPVL PPEFVVLHR PNQDQILTNL SKRKCPSQPV RAAASQD

## General References

Liepinsh E. et al. (2003) J. Biol. Chem. 278:25982-25989.

## DATA

### SDS-PAGE



3ug by SDS-PAGE under reducing condition and visualized by coomassie blue stain.

15% SDS-PAGE (3ug)