

Recombinant human CLEC-2/CLEC1B protein

Catalog Number: ATGP3004

PRODUCT INFORMATION

Expression system

E.coli

Domain

55-229aa

UniProt No.

Q9P126

NCBI Accession No.

NP_057593

Alternative Names

C-type lectin domain family 1 member B, CLEC2, CLEC-2

PRODUCT SPECIFICATION

Molecular Weight

23.1 kDa (198aa)

Concentration

1mg/ml (determined by Bradford assay)

Formulation

Liquid in. 20mM Tris-HCl buffer (pH 8.0) containing 10% glycerol

Purity

> 90% by SDS-PAGE

Tag

His-Tag

Application

SDS-PAGE, Denatured

Storage Condition

Can be stored at +2C to +8C for 1 week. For long term storage, aliquot and store at -20C to -80C. Avoid repeated freezing and thawing cycles.

BACKGROUND

Description

CLEC1B also known as C-type lectin domain family 1 member B. Natural killer (NK) cells express multiple calcium-dependent (C-type) lectin-like receptors, such as CD94 (KLRD1; MIM 602894) and NKG2D (KLRC4; MIM 602893), that interact with major histocompatibility complex class I molecules and either inhibit or activate cytotoxicity and cytokine secretion. CLEC2 is a C-type lectin-like receptor expressed in myeloid cells and NK cells. Recombinant human CLEC1B, fused to His-tag at N-terminus, was expressed in E. coli.

Recombinant human CLEC-2/CLEC1B protein

Catalog Number: ATGP3004

Amino acid Sequence

<MGSSHHHHHH SSGLVPRGSH MGS>SVMQRNY LQGENENRTG TLQQLAKRFC QYVVKQSELK GTFKGHKCSP
CDTNWRYYGD SCYGFFRHNL TWEESKQYCT DMNATLLKID NRNIVEYIKA RTHLIRWVGL SRQKSNEVWK WEDGSVISEN
MFEFLEDGKG NMNCAYFHNG KMHPTFCENK HYLMCERKAG MTKVDQLP

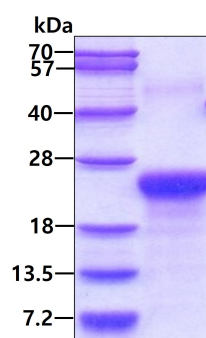
General References

Manne BK., et al. (2013) J. Biol. Chem. 288 (11), 7717-7726

Hughes CE., et al. (2013) J. Biol. Chem. 288 (7), 5127-5135

DATA

SDS-PAGE



3ug by SDS-PAGE under reducing condition and visualized by coomassie blue stain.