

# Recombinant human KLF4 protein

Catalog Number: ATGP3009

## PRODUCT INFORMATION

---

### Expression system

E.coli

### Domain

11-395aa

### UniProt No.

O43474

### NCBI Accession No.

NP\_004226

### Alternative Names

Kruppel-like factor 4, EZF, GKLF

## PRODUCT SPECIFICATION

---

### Molecular Weight

44.2 kDa (422aa)

### Concentration

1mg/ml (determined by Bradford assay)

### Formulation

Liquid in. 20mM Tris-HCl buffer (pH 8.0) containing 10% glycerol

### Purity

> 85% by SDS-PAGE

### Tag

His-Tag

### Application

SDS-PAGE, Denatured

### Storage Condition

Can be stored at +2C to +8C for 1 week. For long term storage, aliquot and store at -20C to -80C. Avoid repeated freezing and thawing cycles.

## BACKGROUND

---

### Description

KLF4 also known as Kruppel-like factor4. KLF4 is a transcription factor which acts as both an activator and repressor. This protein is expressed principally in erythroid tissues and found predominantly in gut. KLF4 is involved in the differentiation of epithelial cells and may also function in skeletal and kidney development. Recombinant human KLF4 protein, was expressed in E. coli

### Amino acid Sequence

<MRGSHHHHHH GMASMTGGQQ MGRDLYDDDD KDRWGSM>AVS DALLPSFSTF ASGPAGREKT LRQAGAPNNR

# Recombinant human KLF4 protein

Catalog Number: ATGP3009

WREELSHMKR LPPVLPGRPY DLAAATVATD LESGGAGAAC GGSNLAPLPR RETEEFNLL DLDFILSNL THPPESVAAT  
VSSASASSS SSPSSSGPAS APSTCSFTYP IRAGNDPGVA PGGTGGGLLY GRESAPPPTA PFNLADINDV SPSGGFVAEL  
LRPELDPVYI PPQQPPGG GLMGKFLKA SLSAPGSEYG SPSVISVSKG SPDGSHPVVV APYNGGPRT CPKIKQEAVS  
SCTHLGAGPP LSNHRPAAH DFPLGRQLPS RTTPTLGLLE VLSSRDCHPA LPLPPGFHPH PGPNYPSFLP DQMOPQVPPL  
HYQELMPPGS CMPEEPKPKR GRRSWPRKRT AT

## General References

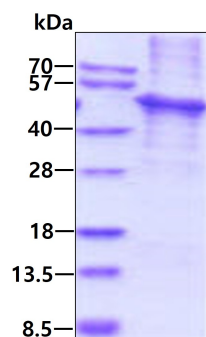
Wei X., et al (2007). Cancer Res. 67:1853-1858.

Zhang P., et al (2010). J. Biol. Chem. 285:9180-9189.

## DATA

---

### SDS-PAGE



3ug by SDS-PAGE under reducing condition and visualized by coomassie blue stain.