

Recombinant human CRMP1 protein

Catalog Number: ATGP3019

PRODUCT INFORMATION

Expression system

E.coli

Domain

1-572aa

UniProt No.

Q14194

NCBI Accession No.

NP_001304

Alternative Names

Dihydropyrimidinase-related protein 1, DRP-1, Collapsin response mediator protein 1, CRMP-1, Inactive dihydropyrimidinase, Unc-33-like phosphoprotein 3, ULIP-3, DPYSL1, ULIP3

PRODUCT SPECIFICATION

Molecular Weight

64.8 kDa (597aa) Multiple bands

Concentration

1mg/ml (determined by Bradford assay)

Formulation

Liquid in. Phosphate-Buffered Saline (pH 7.4) containing 10% glycerol, 1mM DTT, 0.2mM PMSF

Purity

> 95% by SDS-PAGE

Endotoxin level

< 1 EU per 1ug of protein (determined by LAL method)

Tag

His-Tag

Application

SDS-PAGE

Storage Condition

Can be stored at +2C to +8C for 1 week. For long term storage, aliquot and store at -20C to -80C. Avoid repeated freezing and thawing cycles.

BACKGROUND

Description

CRMP1 also known as Dihydropyrimidinase-related protein 1 isoform2. It is necessary for signaling by class 3 semaphorins and subsequent remodeling of the cytoskeleton. It plays a role in axon guidance, invasive growth and cell migration and may participate in cytokinesis. Recombinant human CRMP1, fused to His-tag at N-

Recombinant human CRMP1 protein

Catalog Number: ATGP3019

terminus, was expressed in E. coli and purified by using conventional chromatography techniques.

Amino acid Sequence

MGSSHHHHHHH SSSLVPRGSH MGSEFMSYQG KKSIPHITSD RLLIKGGR II NDDQSLYADV YLEDGLIKQI GENLIVPGGV
KTIEANGRMV IPGGIDVNTY LQKPSQGMTA ADDFFQGTRA ALVGGTTMII DHVVPEPGSS LLTSFEKWHE AADTKSCCDY
SLHVDITSWY DGVREELEVL VQDKGVNSFQ VYMAYKDVIYQ MSDSQLYEAF TFLKGLGAVI LVHAENGDLI AQEQKRILEM
GITGPEGHAL SRPEELEAEA VFRAITIAGR INCPVYITKV MSKSAADIIA LARKKGPLVF GEPIAASLGT DGTHYWSKNW
AKAAAFVTSP PLSPDPTTPD YLTSLACGD LQVTGSGHCP YSTAQKAVGK DNFTLIPEGV NGIEERMTVV WDKAVATGKM
DENQFVAVTS TNAAKIFNLY PRKGRIAVGS DADVVIWDPD KLKTITAKSH KSAVEYNIFE GMECHGSPLV VISQ GKIVFE
DGNINVNKGM GRFIPRKAFP EHL YQRVKIR NKVFLQGV S RGM YDGPVYE VPATPKYATP APSAKSSPSK HQPPPIRNLH
QSNFSLSGAQ IDDNPRRTG HRIVAPPGGR SNITSLG

General References

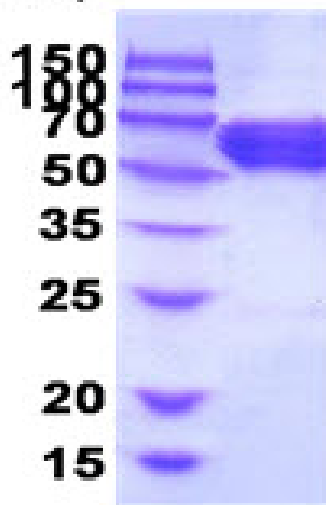
Shih J.-Y. et al. (2001) J. Natl. Cancer Inst. 93:1392-1400.

Chen T.C. et al. (2009) J. Proteome Res. 8:4943-4953.

DATA

SDS-PAGE

(kDa)



3ug by SDS-PAGE under reducing condition and visualized by coomassie blue stain.

15% SDS-PAGE (3ug)