

Recombinant human TOM1L2 protein

Catalog Number: ATGP3023

PRODUCT INFORMATION

Expression system

E.coli

Domain

1-507aa

UniProt No.

Q6ZVM7

NCBI Accession No.

NP_001076437

Alternative Names

TOM1-like protein 2 isoform 3, TOM1-like protein 2 isoform 3, Sulfite oxidase mitochondrial; sulfite oxidase, mitochondrial

PRODUCT SPECIFICATION

Molecular Weight

58.2 kDa (532aa)

Concentration

0.5mg/ml (determined by Bradford assay)

Formulation

Liquid in. Phosphate-Buffered Saline (pH 7.4) containing 10% glycerol, 1mM DTT

Purity

> 80% by SDS-PAGE

Tag

His-Tag

Application

SDS-PAGE

Storage Condition

Can be stored at +2C to +8C for 1 week. For long term storage, aliquot and store at -20C to -80C. Avoid repeated freezing and thawing cycles.

BACKGROUND

Description

TOM1L2 also known as TOM1-like protein 2. TOM1L2 is probable role in protein transport. It may regulate growth factor-induced mitogenic signaling. Recombinant human TOM1L2 was expressed in E. coli and purified by using conventional chromatography techniques

Amino acid Sequence

MGSSHHHHHH SGLVPRGSH MGSEFMEFLL GNPSTPVGQ CLEKATDGSL QSEDWTLNME ICDIINETEE GPKDAIRALK

Recombinant human TOM1L2 protein

Catalog Number: ATGP3023

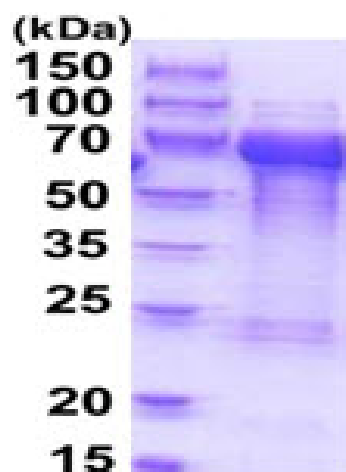
KRLNGNRNYR EVMLALTVLE TCVKNCGHRF HILVANRDFI DSVLVKIISP KNNPPTIVQD KVLALIQAWA DAFRSSPDLT
GVVHIYEELK RKGVEFPMAD LDALSPIHTP QRSVPEVDPA ATMPRSQSQQ RTSAGSYSSP PPAPYSAPQA PALSVTGPIT
ANSEQIARLR SELDVVRGNT KVMSEMLTEM VPGQEDSSDL ELLQELNRTC RAMQQRIVEL ISRVSNEEVT EELLHVNDL
NNVFLRYERF ERYRSGRSVQ NASNGVLNEV TEDNLIDLGP GSPAVVSPMV GNTAPPSSLS SQLAGLDLGT ESVSGTLSSL
QQCNPRDGF D MFAQTRGNSL AEQRKVTYE DPQAVGGLAS ALDNRKQSSE GIPVAQPSVM DDIEVWLRTD LKGDDLEEGV
TSEEDKFLE ERAKAAEMVP DLPSPMEAP APASNPSGRK KPERSEDALF AL

General References

Olsen J.V., et al. (2010) *Sci. Signal.* 3:RA3-RA3.
Bi W., et al. (2002) *Genome Res.* 12:713-728.

DATA

SDS-PAGE



3ug by SDS-PAGE under reducing condition and visualized by coomassie blue stain.

15% SDS-PAGE (3ug)