

# Recombinant human MINCLE/CLEC4E protein

Catalog Number: ATGP3025

## PRODUCT INFORMATION

---

### Expression system

E.coli

### Domain

41-219aa

### UniProt No.

Q9ULY5

### NCBI Accession No.

NP\_055173

### Alternative Names

CLEC4E, CLECSF9, C-type lectin domain family 4 member E, C-type lectin superfamily member 9, Macrophage lectin 2, Macrophage-inducible C-type lectin, MINCLE, NtmntanCLEC4E Ege lectin 2

## PRODUCT SPECIFICATION

---

### Molecular Weight

22.9 kDa (200aa)

### Concentration

0.25mg/ml (determined by Bradford assay)

### Formulation

Liquid in. 20mM Tris-HCl buffer (pH 8.0) containing 10% glycerol

### Purity

> 85% by SDS-PAGE

### Tag

His-Tag

### Application

SDS-PAGE, Denatured

### Storage Condition

Can be stored at +2C to +8C for 1 week. For long term storage, aliquot and store at -20C to -80C. Avoid repeated freezing and thawing cycles.

## BACKGROUND

---

### Description

CLEC4E also known as C-type lectin domain family 4, member E. CLEC4E is a C-type lectin receptor expressed by a variety of antigen presenting cells including macrophages, neutrophils, dendritic cells and B cells; a variety of stimuli including stress are known to induce the expression of CLEC4E. Recombinant human CLEC4E, fused to His-tag at N-terminus, was expressed in E. coli.

## Recombinant human MINCLE/CLEC4E protein

Catalog Number: ATGP3025

### Amino acid Sequence

<MGSSHHHHHH SSGLVPRGSH M>RCVVTRIF QTCDEKKFQL PENFTELSY NYGSGSVKNC CPLNWEYFQS  
SCYFFSTDTI SWALSLKNCS AMGAHLVVIN SQEEQEFSLY KKPCKMREFFI GLSDQVVEGQ WQWVDGTPLT KLSLFWDVGE  
PNNIATLEDC ATMRDSSNPR QNWNDVTCFL NYFRICEMVG INPLNKGKSL

### General References

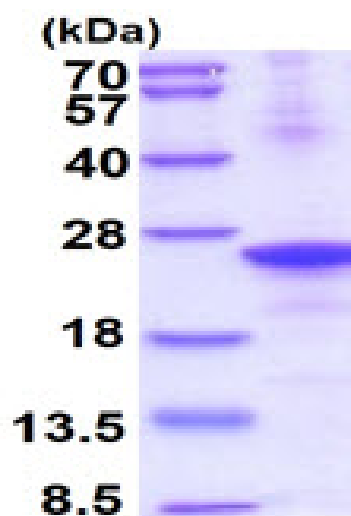
Furukawa A., et al. (2013) Proc. Natl. Acad. Sci. u.S.A. 110 (43), 17438-17443

Kawata K., et al. (2012) J. Autoimmun. 39 (4), 315-322

## DATA

---

### SDS-PAGE



3ug by SDS-PAGE under reducing condition and visualized by coomassie blue stain.

-----  
15% SDS-PAGE (3ug)