

# Recombinant human RNMTL1 protein

Catalog Number: ATGP3038

## PRODUCT INFORMATION

---

### Expression system

E.coli

### Domain

1-420aa

### UniProt No.

Q9HC36

### NCBI Accession No.

NP\_060616

### Alternative Names

RNA methyltransferase-like protein 1, RNA methyltransferase-like protein 1, HC90

## PRODUCT SPECIFICATION

---

### Molecular Weight

49.4 kDa (443aa)

### Concentration

1mg/ml (determined by Bradford assay)

### Formulation

Liquid in. 20mM Tris-HCl buffer (pH 8.0) containing 10% glycerol

### Purity

> 85% by SDS-PAGE

### Tag

His-Tag

### Application

SDS-PAGE, Denatured

### Storage Condition

Can be stored at +2C to +8C for 1 week. For long term storage, aliquot and store at -20C to -80C. Avoid repeated freezing and thawing cycles.

## BACKGROUND

---

### Description

RNMTL1 also known as RNA methyltransferase-like protein 1 is belong to the RNA methyltransferase TrmH family. This protein is probable RNA methyltransferase and expressed at same level in normal liver and hepatocarcinoma. Recombinant human RNMTL1, fused to His-tag at N-terminus, was expressed in E. coli.

### Amino acid Sequence

MGSSHHHHHH SGLVPRGSH MGSMAALVRP ARFVVRPLLQ VVQAWDL DAR RWVRALRRSP VKVVFPSGEV  
VEQKRAPGKQ PRKAPSEASA QEQREKQPLE ESASRAPSTW EESGLRYDKA YPGDRRLSSV MTIVKSRPFR EKQGGKILLEG

# Recombinant human RNMTL1 protein

Catalog Number: ATGP3038

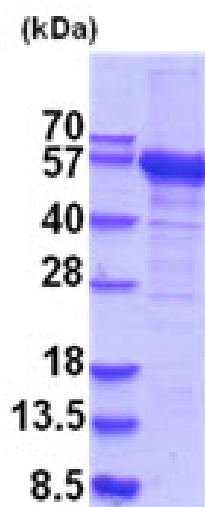
RRLLSDALKA GAVPKMFFFS RLEYLKELPV DKLKGVSLIK VKFEDIKDWS DLVTPQGIMG IFAKPDHVKM TYPKTQLQHS  
LPLLLICDNL RDPGNLGTIL RSAAGAGCSK VLLTKGCVDA WEPKVL RAGM GAHFRMPIIN NLEWETVPNY LPPDTRVYVA  
DNCGLYAQAE MSNKASDHGW VCDQRVMKFH KYEEEEEDVET GASQDWLPHV EVQSYSDSWT EAPAAVVIGG  
ETYGVSLESL QLAESTGGKR LLIPVVP GVD SLNSAMAASI LLFEGKRQLR GRAEDLSRDR SYH

## General References

Xu J., et al. (2002) Cell Res. 12:177-197

## DATA

### SDS-PAGE



3ug by SDS-PAGE under reducing condition and visualized by coomassie blue stain.

15% SDS-PAGE (3ug)