

# Recombinant human PYCR2 protein

Catalog Number: ATGP3066

## PRODUCT INFORMATION

---

### Expression system

E.coli

### Domain

1-320aa

### UniProt No.

Q96C36

### NCBI Accession No.

NP\_037460

### Alternative Names

Pyrroline-5-carboxylate reductase 2 isoform 1, P5CR2

## PRODUCT SPECIFICATION

---

### Molecular Weight

36 kDa (343aa) confirmed by MALDI-TOF

### Concentration

0.25mg/ml (determined by Bradford assay)

### Formulation

Liquid in. Phosphate-Buffered Saline (pH 7.4) containing 50% glycerol, 5mM DTT, 1mM EDTA

### Purity

> 85% by SDS-PAGE

### Tag

His-Tag

### Application

SDS-PAGE

### Storage Condition

Can be stored at +2C to +8C for 1 week. For long term storage, aliquot and store at -20C to -80C. Avoid repeated freezing and thawing cycles.

## BACKGROUND

---

### Description

PYCR2 also known as pyrroline-5-carboxylate reductase 2 isoform 1, belongs to the pyrroline-5-carboxylate reductase family. This protein catalyzes the conversion of pyrroline-5-carboxylate to proline, which is the last step in proline biosynthesis. The 3 substrates of this enzyme are L-proline, NAD<sup>+</sup>, and NADP<sup>+</sup>, whereas its 4 products are 1-pyrroline-5-carboxylate, NADH, NADPH, and H<sup>+</sup>. Recombinant human PYCR2, fused to His-tag at N-terminus, was expressed in E. coli and purified by using conventional chromatography techniques.

# Recombinant human PYCR2 protein

Catalog Number: ATGP3066

## Amino acid Sequence

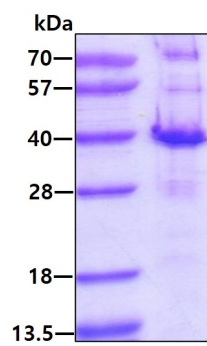
<MGSSHHHHHH SSGLVPRGSH MGS>MSVGFIG AGQLAYALAR GFTAAGILSA HKIIASSPEM NLPTVSALRK  
MGVNLTRSNK ETVKHSDVLF LAVKPHIIPF ILDEIGADVQ ARHIVVSCAA GVTISSVEKK LMAFQPAPKV IRCMTNTPVV  
VQEGATVYAT GTHALVEDGQ LLEQLMSSVG FCTEVEEDLI DAVTGLSGSG PAYAFMALDA LADGGVKMGL PRRLAIQLGA  
QALLGAAKML LDSEQHPCQL KDNVCSPGGA TIHALHFLES GGFRSLLINA VEASCIRTRE LQSMADQEKI SPAALKKTLL  
DRVKLESPTV STLTPSSPGK LLTRSLALGG KKD

## General References

De Ingeniis J, et al. (2012). PLoS One. 7(9):e45190.

## DATA

### SDS-PAGE



3 $\mu$ g by SDS-PAGE under reducing condition and visualized by coomassie blue stain.