

# Recombinant human IL-28B/IFNL3 protein

Catalog Number: ATGP3080

## PRODUCT INFORMATION

---

### Expression system

Baculovirus

### Domain

22-196aa

### UniProt No.

Q8IZI9

### NCBI Accession No.

NP\_742151.2

### Alternative Names

Cytokine Zcyto22, IL28B, IL-28B, IL28C, IL-28C, Interferon lambda-3, Interleukin-28B, Interleukin-28C, ZCYTO22

## PRODUCT SPECIFICATION

---

### Molecular Weight

20.4 kDa (181aa)

### Concentration

0.25mg/ml (determined by Bradford assay)

### Formulation

Liquid in. Phosphate-Buffered Saline (pH 7.4) containing 20% glycerol, 1mM EDTA, 0.1mM PMSF.

### Purity

> 85% by SDS-PAGE

### Endotoxin level

< 1 EU per 1ug of protein (determined by LAL method)

### Tag

His-Tag

### Application

SDS-PAGE

### Storage Condition

Can be stored at +2C to +8C for 1 week. For long term storage, aliquot and store at -20C to -80C. Avoid repeated freezing and thawing cycles.

## BACKGROUND

---

### Description

IFNL3, also known as Interferon lambda-3, is a secreted protein which belongs to the IL-28/IL-29 family. It is a cytokine with immunomodulatory activity. It up-regulates MHC class I antigen expression. This protein displays potent antiviral activity and antitumor activity. It seems to signal through the Jak-STAT pathway. It also contributes to viral resistance and is known to be upregulated by interferons and by RNA virus infection.

# Recombinant human IL-28B/IFNL3 protein

Catalog Number: ATGP3080

Recombinant human IFNL3, fused to His-tag at C-terminus, was expressed in insect cell and purified by using conventional chromatography techniques.

## Amino acid Sequence

VPVARLRGAL PDARGCHIAQ FKSLSPQELQ AFKRAKDALE ESLLLKDCKC RSRLFPRPWD LRQLQVRERP VALEAELALT  
LKVLEATADT DPALGDVLDQ PLHTLHHILS QLRACIQQP TAGPRTRGRL HHWLHRLQEA PKKESPGCLE ASVTFNLFRL  
LTRDLNCLVAS GDLCV<HHHHH H>

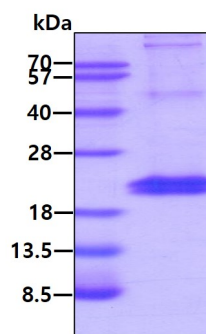
## General References

Kamal SM. et al. (2014) Am J Gastroenterol. 109(2):199-211.

Frizon K. et al. (2014) Braz J Infect Dis. 18(2):229-30.

## DATA

### SDS-PAGE



3ug by SDS-PAGE under reducing condition and visualized by coomassie blue stain