

# Recombinant human Cytohesin-1 protein

Catalog Number: ATGP3105

## PRODUCT INFORMATION

---

### Expression system

E.coli

### Domain

1-398aa

### UniProt No.

Q15438

### NCBI Accession No.

NP\_004753

### Alternative Names

Cytohesin1 isoform1, B2-1, CYTOHESIN-1, D17S811E, PSCD1, SEC7

## PRODUCT SPECIFICATION

---

### Molecular Weight

48.8 kDa (421aa) confirmed by MALDI-TOF

### Concentration

0.5mg/ml (determined by Bradford assay)

### Formulation

Liquid in. Phosphate-Buffered Saline (pH 7.4) containing 10% glycerol, 1mM DTT

### Purity

> 85% by SDS-PAGE

### Tag

His-Tag

### Application

SDS-PAGE

### Storage Condition

Can be stored at +2C to +8C for 1 week. For long term storage, aliquot and store at -20C to -80C. Avoid repeated freezing and thawing cycles.

## BACKGROUND

---

### Description

CYTH1 also known as Cytohesin1 isoform1. CYTH1 promotes guanine-nucleotide exchange on ARF1 and ARF5 also promotes the activation of ARF factors through replacement of GDP with GTP. Recombinant human CYTH1 was expressed in E. coli and purified by using conventional chromatography techniques

### Amino acid Sequence

MGSSHHHHHH SGLVPRGSH MGSMEEDDSY VPSDLTAEER QELENIRRRK QELLADIQRL KDEIAEVANE IENLGSTEER KMQQRNKQVA MGRKKFNMDP KKGIFLIEN DLLKNTCEDI AQFLYKGEGL NKTAIGDYLG ERDEFNIQVL HAFVELHEFT

# Recombinant human Cytohesin-1 protein

Catalog Number: ATGP3105

DLNLVQALRQ FLWSFRLPGE AQKIDRMMEA FAQRYCQCNN GVVFQSTDTCTY VLSFAIIMLN TSLHNPVND KPTVERFIAM  
NRGINDGGDL PEELLRNLYE SIKNEPFKIP EDDGNDLHTT FFNPDRGWL LKLGGRVKT WKRRWFILTD NCLYYFEYTT  
DKEPRGIPL ENLSIREVED SKKPNCFELY IPDNKDQVIK ACKTEADGRV VEGNHTVYRI SAPTPEEKKEE WIKCIKAAS  
RDPFYEMLAA RKKKVSSTKR H

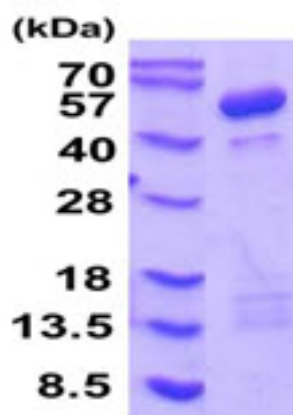
## General References

Ogasawara M., et al. (2000) J. Biol. Chem. 275:3221-3230.

Betz S.F., et al. (1998) Proc. Natl. Acad. Sci. U.S.A. 95:7909-7914.

## DATA

### SDS-PAGE



3ug by SDS-PAGE under reducing condition and visualized by coomassie blue stain.

15% SDS-PAGE (3ug)