

# Recombinant human CHRNA3 protein

Catalog Number: ATGP3106

## PRODUCT INFORMATION

---

**Expression system**

E.coli

**Domain**

32-240aa

**UniProt No.**

P32297

**NCBI Accession No.**

NP\_000734

**Alternative Names**

Neuronal acetylcholine receptor subunit alpha-3 isoform 1, LNCR2, NACHRA3, PAOD2

## PRODUCT SPECIFICATION

---

**Molecular Weight**

27 kDa (232aa)

**Concentration**

1mg/ml (determined by Bradford assay)

**Formulation**

Liquid in. 20mM Tris-HCl buffer (pH 8.0) containing 10% glycerol

**Purity**

&gt; 80% by SDS-PAGE

**Tag**

His-Tag

**Application**

SDS-PAGE, Denatured

**Storage Condition**

Can be stored at +2C to +8C for 1 week. For long term storage, aliquot and store at -20C to -80C. Avoid repeated freezing and thawing cycles.

## BACKGROUND

---

**Description**

CHRNA3 also known as neuronal acetylcholine receptor subunit alpha-3 isoform 1 is a member of the nicotinic acetylcholine receptor family of proteins. Members of this family of proteins form pentameric complexes comprised of both alpha and beta subunits. CHRNA3 is a ligand-gated ion channel that likely plays a role in neurotransmission. CHRNA3 have been associated with an increased risk of smoking initiation and an increased susceptibility to lung cancer. Alternatively spliced transcript variants have been described. Recombinant human CHRNA3 protein, fused to His-tag at N-terminus, was expressed in E. coli.

# Recombinant human CHRNA3 protein

Catalog Number: ATGP3106

## Amino acid Sequence

<MGSSHHHHHH SSGLVPRGSH MGS>SEAEHRL FERLFEDYNE IIRPVANVSD PVIIHFEVSM SQLVKVDEVN QIMETNLWLK  
QIWNDYKLLW NPSDYGGAEF MRVPAQKIWK PDIVLYNNAV GDFQVDDTK ALLKYTG EVT WIPPAIFKSS CKIDVTYFPF  
DYQNCTMKFG SWSYDKAKID LVLIGSSMNL KDYWESGEWA IIKAPGYKHD IKYNCCEIY PDITYSLYIR RL

## General References

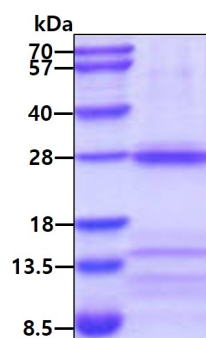
Criado JR., et al. (2014) Twin Res Him Genet. 17(2):80-8.

Rempel N., et al. (1998) Hum. Genet. 103:645-653.

## DATA

---

### SDS-PAGE



3 $\mu$ g by SDS-PAGE under reducing condition and visualized by coomassie blue stain.