

# Recombinant human Aminopeptidase P1/XPNPEP1 protein

Catalog Number: ATGP3107

## PRODUCT INFORMATION

---

### Expression system

E.coli

### Domain

1-623aa

### UniProt No.

Q9NQW7

### NCBI Accession No.

NP\_065116

### Alternative Names

Xaa-Pro aminopeptidase 1 isoform 1, APP1, SAMP, XPNPEP, XPNPEPL, XPNPEPL1

## PRODUCT SPECIFICATION

---

### Molecular Weight

73.4 kDa (655aa)

### Concentration

1mg/ml (determined by absorbance at 280nm)

### Formulation

Liquid in. Phosphate-Buffered Saline (pH 7.4) containing 20% glycerol

### Purity

> 85% by SDS-PAGE

### Tag

His-Tag

### Application

SDS-PAGE

### Storage Condition

Can be stored at +2C to +8C for 1 week. For long term storage, aliquot and store at -20C to -80C. Avoid repeated freezing and thawing cycles.

## BACKGROUND

---

### Description

XPNPEP1 also known as Xaa-Pro aminopeptidase 1 isoform 1, is encodes the cytosolic form of a metalloaminopeptidase that catalyzes the cleavage of the N-terminal amino acid adjacent to a proline residue. This product may play a role in degradation and maturation of tachykinins, neuropeptides, and peptide hormones. Recombinant human XPNPEP1 protein, fused to His-tag at N-terminus, was expressed in E. coli and purified by using conventional chromatography techniques.

# Recombinant human Aminopeptidase P1/XPNPEP1 protein

Catalog Number: ATGP3107

## Amino acid Sequence

<MGSSHHHHHH SSGLVPRGSH MGSEFELRRQ AS>MPPKVTSE LLRQLRQAMR NSEYVTEPIQ AYIIPSGDAH  
QSEYIAPCDC RRAFVSGFDG SAGTAITEE HAAMWTDGRY FLQAAQMDS NWTLMKMGLK DTPTQEDWLV SVLPEGSRVG  
VDPLIPTDY WKKMAKVLRS AGHHLIPVKE NLVDKIWTD R PERPCKPLL LGLDYGISW KDKVADLRK MAERNVMWFV  
VTALDEIAWL FNLRGSDVEH NPVFFSYAII GLETIMLFID GDRIDAPSVK EHLLLDLGLE AEYRIQVHPY KSILSELKAL  
CADLSPREKV WVSDKASYAV SETIPKDHR C CMPYTPICIA KAVKNSAESE GMRRRAHIKDA VALCELFNWL EKEVPKGGVT  
EISAADKAE E FRRQQADFVD LSFPTISSTG PNGAIIHYAP VPETNRTL S DEVYLIDSGA QYKDGTTDVT RTMHFGTPTA  
YEKECFYVL KGHIAVSAAV FPTGTKGHL L DSFARSALWD SGLDYLHGTG HGVGSFLNVH EGPCGISYKT FSDEPLEAGM  
IVTDEPGYYE DGAFGIRIEN VVLVVPVKT YNFNNRGS L FEPLTLVPIQ TKMIDVDSL T DKECDWLNNY HLTCRDVIGK  
ELQKQGRQEA LEWLIRETQP ISKQH

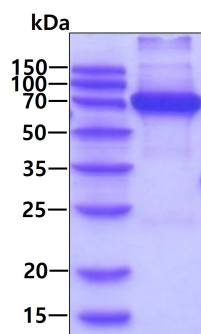
## General References

Cottrell G.S., et al. (2000) *Biochemistry* 39:15121-15128.

Li X., et al. (2008) *J. Biol. Chem.* 283:22858-22866.

## DATA

### SDS-PAGE



3ug by SDS-PAGE under reducing condition and visualized by coomassie blue stain.