

# Recombinant human CRTAM protein

Catalog Number: ATGP3216

## PRODUCT INFORMATION

---

### Expression system

Baculovirus

### Domain

18-287aa

### UniProt No.

O95727

### NCBI Accession No.

NP\_062550

### Alternative Names

CRTAM, CD355

## PRODUCT SPECIFICATION

---

### Molecular Weight

31kDa (278aa)

### Concentration

1mg/ml (determined by absorbance at 280nm)

### Formulation

Liquid in. Phosphate-Buffered Saline (pH 7.4) containing 10% glycerol

### Purity

> 90% by SDS-PAGE

### Endotoxin level

< 1 EU per 1ug of protein (determined by LAL method)

### Tag

His-Tag

### Application

SDS-PAGE

### Storage Condition

Can be stored at +2C to +8C for 1 week. For long term storage, aliquot and store at -20C to -80C. Avoid repeated freezing and thawing cycles.

## BACKGROUND

---

### Description

CRTAM, also known as cytotoxic and regulatory T-cell molecule, is a member of the immunoglobulin superfamily that complies with the structural characteristics of the JAM family of proteins and is phylogenetically more closely related to nectin-like proteins. It is a molecule involved in epithelial cell adhesion. This protein interacts with CADM1 promotes natural killer (NK) cell cytotoxicity and interferon-gamma (IFN-gamma) secretion by CD8+

# Recombinant human CRTAM protein

Catalog Number: ATGP3216

cells in vitro as well as NK cell-mediated rejection of tumors expressing CADM3 in vivo. Recombinant human CRTAM, fused to His-tag at C-terminus, was expressed in insect cell and purified by using conventional chromatography techniques.

## Amino acid Sequence

SLTNHTETIT VEEQQLTLK CVTSLRKNSS LQWLTPSGFT IFLNEYPAK NSKYQLLHHS ANQLSITVPN VTLQDEGVYK  
CLHYSDSVST KEVKVIVLAT PFKPILEASV IRKQNGEEHV VLMCSTMRSK PPPQITWLLG NSMEVSGGTL HEFETDGKKC  
NTTSTLIHT YGKNSTVDCI IRHRGLQGRK LVAPFRFEDL VTDEETASDA LERNLSSQD PQQPTSTVSV TEDSSTSEID  
KEEKEQTTQD PDLTTEANPQ YLGLARKKSG LEHHHHHH

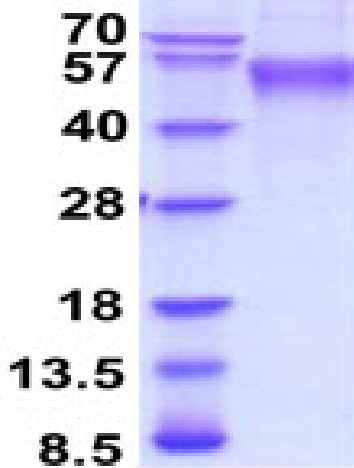
## General References

Kennedy J., et al. (2000) *J. Leukoc. Biol.* 67:725-734.  
Boles K.S., et al. (2005) *Blood* 106:779-786.

## DATA

### SDS-PAGE

(kDa)



3ug by SDS-PAGE under reducing condition and visualized by coomassie blue stain.

15% SDS-PAGE (3ug)