

Recombinant rat CNTF protein

Catalog Number: ATGP3219

PRODUCT INFORMATION

Expression system

E.coli

Domain

1-200aa

UniProt No.

P20294

NCBI Accession No.

NP_037298

PRODUCT SPECIFICATION

Molecular Weight

25.2 kDa (223aa) confirmed by MALDI-TOF

Concentration

0.5mg/ml (determined by Bradford assay)

Formulation

Liquid in. Phosphate-Buffered Saline (pH 7.4) containing 10% glycerol

Purity

> 95% by SDS-PAGE

Endotoxin level

< 1 EU per 1ug of protein (determined by LAL method)

Biological Activity

Measured in a cell proliferation assay using TF-1 human erythroleukemic cells. The ED50 range \leq 40ng/ml.

Tag

His-Tag

Application

SDS-PAGE, Bioactivity

Storage Condition

Can be stored at +2C to +8C for 1 week. For long term storage, aliquot and store at -20C to -80C. Avoid repeated freezing and thawing cycles.

BACKGROUND

Description

CNTF also known as ciliary neurotrophic factor is a survival factor for various neuronal cell types. CNTF is highly conserved across species and exhibits cross-species bioactivity. CNTF is a 25 kDa polypeptide that was originally isolated as a target-derived survival factor of parasympathetic ciliary ganglion neurons. Binding of CNTF to CNTF receptor triggers heterodimerization of gp130 and LIFR, forming an active trimeric receptor complex and

Recombinant rat CNTF protein

Catalog Number: ATGP3219

activates the downstream signaling pathway. Recombinant rat CNTF, fused to His-tag at N-terminus, was expressed in *E. coli* and purified by using conventional chromatography techniques.

Amino acid Sequence

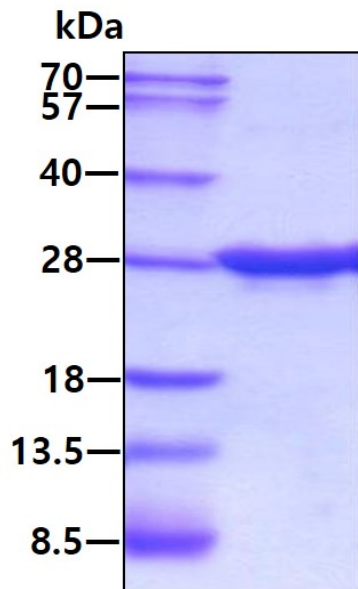
<MGSSHHHHHH SSGLVPRGSH MGS>MAFAEQT PLTLHRRDLC SRSIWLARKI RSDLTALMES YVKHQGLNKN
INLDSVDGVP VASTDRWSEM TEAERLQENL QAYRTFQGML TKLLEDQRVH FTPTEGDFHQ AIHTLMLQVS AFAYQLEELM
VLEQKIPEN EADGMPATVG DGGLFEKKLW GLKVLQELSQ WTVRSIHDLR VISSHQMGIS ALESHYGAKD KQM

General References

Linker R., et al. (2009) *Crit Rev Immunol.* 29(1):43-68.
Stahl N., et al. (1994) *J Neurobiol.* 25(11):1454-66.

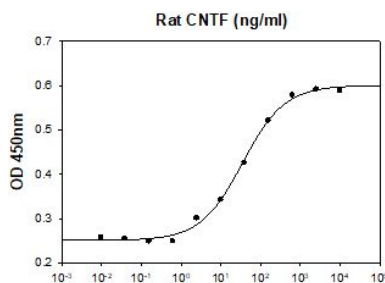
DATA

SDS-PAGE



3 μ g by SDS-PAGE under reducing condition and visualized by coomassie blue stain.

Biological Activity



Rat CNTF stimulates cell proliferation of the TF-1 human erythroleukemic cells. The ED50 range \leq 40 ng/ml.