

# Recombinant human IL-3RB/CSF2RB protein

Catalog Number: ATGP3244

## PRODUCT INFORMATION

---

### Expression system

Baculovirus

### Domain

17-443aa

### UniProt No.

P32927

### NCBI Accession No.

NP\_000386

### Alternative Names

Colony stimulating factor 2 receptor subunit beta, Cytokine receptor common subunit beta, Beta common cytokine receptor, Beta-GM-CSF receptor, GM-CSF/IL-3/IL-5 receptor common beta subunit, IL5RB, CD131, BetaGMR

## PRODUCT SPECIFICATION

---

### Molecular Weight

49.7 kDa (435aa)

### Concentration

0.5mg/ml (determined by absorbance at 280nm)

### Formulation

Liquid in. Phosphate-Buffered Saline (pH 7.4) containing 10% glycerol

### Purity

> 95% by SDS-PAGE

### Endotoxin level

< 1 EU per 1ug of protein (determined by LAL method)

### Tag

His-Tag

### Application

SDS-PAGE

### Storage Condition

Can be stored at +2C to +8C for 1 week. For long term storage, aliquot and store at -20C to -80C. Avoid repeated freezing and thawing cycles.

## BACKGROUND

---

### Description

CSF2RB, also known as cytokine receptor common subunit beta, is a high affinity receptor for interleukin-3, interleukin-5 and granulocyte-macrophage colony-stimulating factor. This unusual form of receptor assembly

# Recombinant human IL-3RB/CSF2RB protein

Catalog Number: ATGP3244

likely applies also to IL-3 and IL-5 receptors, providing a structural basis for understanding their mechanism of activation and for the development of therapeutics. Recombinant human CSF2RB, fused to His-tag at C-terminus, was expressed in insect cell and purified by using conventional chromatography techniques.

## Amino acid Sequence

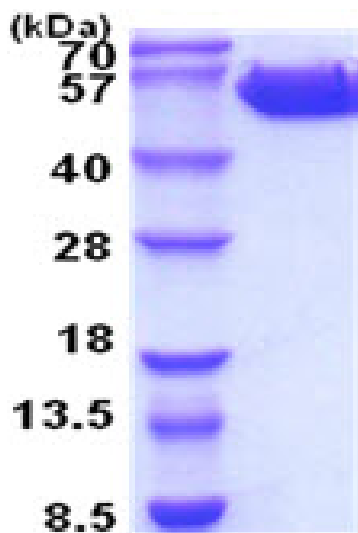
WERSLAGAE E TIPLQTLRCY NDYTSHTCR WADTQDAQRL VNVTLIRRVN EDLLEPVSCD LSDDMPWSAC PHPRCVPRRC  
VIPQSFVVT DVDYFSFQPD RPLGTRLTVT LTQHVQPPEP RDLQISTDQD HFLLTWSVAL GSPQSHWLSP GDLEFEVVYK  
RLQDSWEDAA ILLSNTSQAT LGPEHLMPS TYVARVRTRL APGSRLSGRP SKWSPEVCWD SQPGDEAQPQ NLECFDGA  
VLSCSWEVRK EVASSVSFGL FYKPSPDAGE EECSPVLRG LGS LHTRHHC QIPVPDPATH GQYIVSVQPR RAEKHIKSSV  
NIQMAPP SLN VTKDGDSYSL RWETMKMRYE HIDHTFEIQY RKDTATWKDS KTETLQNAHS MALPALEPST RYWARVRVRT  
SRTGYNGIWS EWSEARSWDT ESVLPMWLEH HHHHH

## General References

Hansen G., et al. (2008) Cell. 134:496-507.  
Mulhern TD., et al. (2000) J Mol Biol. 297:989-1001.

## DATA

### SDS-PAGE



3ug by SDS-PAGE under reducing condition and visualized by coomassie blue stain.

15% SDS-PAGE (3ug)