

# Recombinant human NM23-H1/NME1 protein

Catalog Number: ATGP3250

## PRODUCT INFORMATION

---

### Expression system

E.coli

### Domain

1-152aa

### UniProt No.

P15531

### NCBI Accession No.

NP\_000260.1

### Alternative Names

NME/NM23 nucleoside diphosphate kinase 1, Nucleoside diphosphate kinase A, Granzyme A-activated Dnase, GAAD, Metastasis inhibition factor nm23, NM23-H1, Tumor metastatic process-associated protein, NDK A, NDP kinase A, NDPKA, NM23

## PRODUCT SPECIFICATION

---

### Molecular Weight

17.1 kDa (152aa) confirmed by MALDI-TOF

### Concentration

1mg/ml (determined by Bradford assay)

### Formulation

Liquid in. 20mM Tris-HCl buffer (pH 7.5) containing 1mM DTT, 10% glycerol

### Purity

> 90% by SDS-PAGE

### Endotoxin level

< 1 EU per 1ug of protein (determined by LAL method)

### Biological Activity

Specific activity is > 1,200unit/mg, and is defined as the amount of enzyme that convert 1.0 umole each of ATP and TDP to ADP and TTP per minute at pH 7.5 at 25C in a couple system with PK/LDH.

### Tag

Non-Tagged

### Application

SDS-PAGE, Enzyme Activity

### Storage Condition

Can be stored at +2C to +8C for 1 week. For long term storage, aliquot and store at -20C to -80C. Avoid repeated freezing and thawing cycles.

# Recombinant human NM23-H1/NME1 protein

Catalog Number: ATGP3250

## BACKGROUND

### Description

Non-metastatic cells 1 (NME1), also known as NM23-H1, originally identified as a candidate metastasis suppressor gene. NME1 is expressed in different tumor types where their levels have been alternatively associated with reduced or increased metastatic potential. Reductions in NME1 expression have been significantly associated with aggressive behavior in melanoma, breast, colon, and gastric carcinomas. On the contrary, high levels of NME1 gene expression are noted in the advanced stage of thyroid carcinomas. Recombinant human NME1 was expressed in *E. coli* and purified by using conventional chromatography techniques.

### Amino acid Sequence

MANCERTFIA IKPDGVQRGL VGEIIKRFEQ KGFRLVGLKF MQASEDLLKE HYVDLKDRPF FAGLVKYMHS GPVVAMVWEG LNVVKTGRVM LGETNPADSK PGTIRGDFCI QVGRNIIHGS DSVESAEKEI GLWFHPEELV DYTSCAQNWI YE

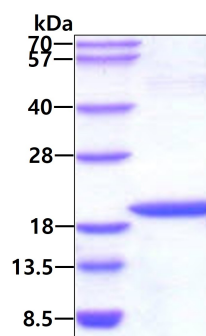
### General References

Tee YT., et al. (2006) Taiwan J Obstet Gynecol. 45(2):107-13.

Negrini A., et al. (2000) Cell Death Differ. 7(9):843-50.

## DATA

### SDS-PAGE



3 $\mu$ g by SDS-PAGE under reducing condition and visualized by coomassie blue stain.