

# Recombinant human IL-6 protein

Catalog Number: ATGP3256

## PRODUCT INFORMATION

---

### Expression system

E.coli

### Domain

30-212aa

### UniProt No.

P05231

### NCBI Accession No.

NP\_000591

### Alternative Names

Interleukin-6, B-cell stimulatory factor 2, BSF-2, CTL differentiation factor, CDF, Hybridoma growth factor, Interferon beta-2, IFN-beta-2, IFNB2, HGF, HSF

## PRODUCT SPECIFICATION

---

### Molecular Weight

20.9 kDa (184aa)

### Concentration

0.5mg/ml (determined by BCA assay)

### Formulation

Liquid in. Phosphate-Buffered Saline (pH 7.4)

### Purity

> 95% by SDS-PAGE

### Endotoxin level

< 1 EU per 1ug of protein (determined by LAL method)

### Biological Activity

Measured in a cell proliferation assay using TF-1 human erythroleukemic cell. The ED50 range  $\leq$  1ng/ml.

### Tag

Non-Tagged

### Application

SDS-PAGE, Bioactivity

### Storage Condition

Can be stored at +2C to +8C for 1 week. For long term storage, aliquot and store at -20C to -80C. Avoid repeated freezing and thawing cycles.

## BACKGROUND

---

# Recombinant human IL-6 protein

Catalog Number: ATGP3256

## Description

IL6, also known as interleukin 6. It is a cytokine with a wide variety of biological functions. It is a potent inducer of the acute phase response. This protein plays an essential role in the final differentiation of B-cells into Ig-secreting cells Involved in lymphocyte and monocyte differentiation. It induces myeloma and plasmacytoma growth and induces nerve cells differentiation. Recombinant human IL6 protein was expressed in E. coli and purified by using conventional chromatography techniques.

## Amino acid Sequence

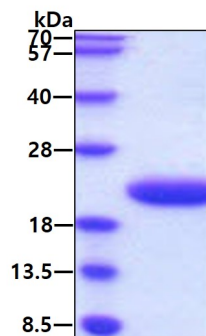
MVPPGEDSKD VAAPHRQPLT SSERIDKQIR YILDGIALR KETCNKSNMC ESSKEALAEN NLNLPKMAEK DGCFOQSGFNE  
ETCLVKIITG LLEFEVYLEY LQNRFESEEE QARAVQMSTK VLIQFLQKKA KNLDAITTPD PTTNASLLTK LQAQNQWLQD  
MTTHLILRSF KEFLQSSLRA LRQM

## General References

May L T., et al. (1991) Cytokine 3(3):204-211.

## DATA

### SDS-PAGE



3 $\mu$ g by SDS-PAGE under reducing condition and visualized by coomassie blue stain.

### Biological Activity

Human IL-6 in a cell proliferation assay using TF-1 human erythroleukemic cell. The ED50 range  $\leq$  1 ng/ml.

