

Recombinant human CRACC/SLAMF7 protein

Catalog Number: ATGP3258

PRODUCT INFORMATION

Expression system

Baculovirus

Domain

23-226aa

UniProt No.

Q9NQ25

NCBI Accession No.

NP_067004

Alternative Names

SLAMF7, CD2 subset 1, CD2-like receptor-activating cytotoxic cells, CRACC, CS1, CD319, Membrane protein FOAP-12, Novel Ly9, Protein 19A

PRODUCT SPECIFICATION

Molecular Weight

23.4 kDa (212aa)

Concentration

0.5mg/ml (determined by absorbance at 280nm)

Formulation

Liquid in. Phosphate-Buffered Saline (pH 7.4) containing 10% glycerol

Purity

> 95% by SDS-PAGE

Endotoxin level

< 1 EU per 1ug of protein (determined by LAL method)

Tag

His-Tag

Application

SDS-PAGE

Storage Condition

Can be stored at +2C to +8C for 1 week. For long term storage, aliquot and store at -20C to -80C. Avoid repeated freezing and thawing cycles.

BACKGROUND

Description

SLAMF7, also known as SLAM family member 7, is a single-pass type 1 membrane protein and a member of the CS2 family of cell surface receptors. Isoform 1 of this protein mediates NK cell activation through a SH2D1A-independent extracellular signal-regulated ERK-mediated pathway. It may play a role in lymphocyte adhesion.

Recombinant human CRACC/SLAMF7 protein

Catalog Number: ATGP3258

SLAMF7 can exert activating or inhibitory influences on cells of the immune system depending on cellular context and the availability of effector proteins. Recombinant human SLAMF7, fused to His-tag at C-terminus, was expressed in insect cell and purified by using conventional chromatography techniques.

Amino acid Sequence

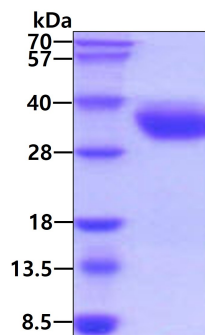
SGPVKELVGS VGGAVTFPLK SKVKQVDSIV WTFNTTPLVT IQPEGGTIIV TQNRNRERVD FPDGGYSLKL SKLKKNDSGI
YYVGIYSSSL QQPSTQEYVL HVYEHLSKPK VTMGLQSNKN GTCVTNLTC MEHGEEDVIY TWKALGQAAN ESHNGSILPI
SWRWGESDMT FICVARNPVS RNFSSPILAR KLCEGAADDP DSSM<LEHHHH HH>

General References

Kim JR et al., (2013) *Inflamm. Res.* 62(8):765-772.
Kramer B et al., (2013) *Infect. Immun.* 81(3):690-696.

DATA

SDS-PAGE



3ug by SDS-PAGE under reducing condition and visualized by coomassie blue stain.