

Recombinant human IL-6 protein

Catalog Number: ATGP3278

PRODUCT INFORMATION

Expression system

Baculovirus

Domain

30-212aa

UniProt No.

P05231

NCBI Accession No.

NP_000591

Alternative Names

Interleukin-6, B-cell stimulatory factor 2, BSF-2, CTL differentiation factor, CDF, Hybridoma growth factor, Interferon beta-2, IFN-beta-2, IFNB2, HGF, HSF

PRODUCT SPECIFICATION

Molecular Weight

21.6Da (189aa)

Concentration

0.5mg/ml (determined by Bradford assay)

Formulation

Liquid in. Phosphate-Buffered Saline (pH 7.4) containing 10% glycerol

Purity

> 95% by SDS-PAGE

Endotoxin level

< 1 EU per 1ug of protein (determined by LAL method)

Biological Activity

Measured in a cell proliferation assay using TF-1 human erythroleukemic cell. The ED50 range \leq 0.8 ng/ml.

Tag

His-Tag

Application

SDS-PAGE, Bioactivity

Storage Condition

Can be stored at +2C to +8C for 1 week. For long term storage, aliquot and store at -20C to -80C. Avoid repeated freezing and thawing cycles.

BACKGROUND

Recombinant human IL-6 protein

Catalog Number: ATGP3278

Description

IL6, also known as interleukin 6. It is a cytokine with a wide variety of biological functions. It is a potent inducer of the acute phase response. This protein plays an essential role in the final differentiation of B-cells into Ig-secreting cells Involved in lymphocyte and monocyte differentiation. It induces myeloma and plasmacytoma growth and induces nerve cells differentiation. Recombinant human IL6 protein was expressed in E. coli and purified by using conventional chromatography techniques.

Amino acid Sequence

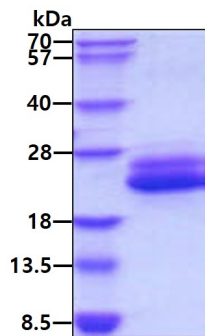
VPPGEDSKDV AAPHRQLPTS SERIDKQIRY ILDGISALRK ETCNKSNMCE SSKEALAENN LNLPKMAEKD GCFQSGFNEE
TCLVKIITGL LEFEVYLEYL QNRFESSEEQ ARAVQMSTKV LIQFLQKKAK NLDAITTPDP TTNASLLTKL QAQNQWLQDM
TTHLILRSFK EFLQSSLRAL RQM<HHHHHH>

General References

Wong GG., et al. (1988) Behring Inst Mitt. 83:40-47.
Ming JE., et al. (1989) J Mol Cell Immunol. 4:203-211.

DATA

SDS-PAGE



3ug by SDS-PAGE under reducing condition and visualized by coomassie blue stain

Biological Activity

Human IL-6 in a cell proliferation assay using TF-1 human erythroleukemic cell. The ED50 range ≤ 0.8 ng/ml.

