

Recombinant human Chitinase 3-like 2/CHI3L2 protein

Catalog Number: ATGP3294

PRODUCT INFORMATION

Expression system

Baculovirus

Domain

27-390aa

UniProt No.

Q15782

NCBI Accession No.

NP_003991

Alternative Names

CHI3L2, CHIL2, YKL-39, YKL39

PRODUCT SPECIFICATION

Molecular Weight

41.9 kDa (372aa)

Concentration

0.5mg/ml (determined by absorbance at 280nm)

Formulation

Liquid in. Phosphate-Buffered Saline (pH 7.4) containing 10% glycerol

Purity

> 90% by SDS-PAGE

Endotoxin level

< 1 EU per 1ug of protein (determined by LAL method)

Tag

His-Tag

Application

SDS-PAGE

Storage Condition

Can be stored at +2C to +8C for 1 week. For long term storage, aliquot and store at -20C to -80C. Avoid repeated freezing and thawing cycles.

BACKGROUND

Description

CHI3L2, also known as chitinase-3-like protein 2, belongs to chitinase protein family. It is secreted by synovial fibroblasts, chondrocytes, and TGFb/IL4 stimulated monocyte derived macrophages. It has been proposed as a potential biomarker for osteoarthritis. Recombinant human CHI3L2, fused to His-tag at C-terminus, was expressed in insect cell and purified by using conventional chromatography techniques.

Recombinant human Chitinase 3-like 2/CHI3L2 protein

Catalog Number: ATGP3294

Amino acid Sequence

YKLVCYFTNW SDRQEPGKF TPENIDPFLC SHLIYSFASI ENNKVIKDK SEVMLYQTIN SLKTKNPKLK ILLSIGGYLF
GSKGFHPMVD SSTRLEFIN SIILFLRNHN FDGLDVSWIY PDQKENTHFT VLIHELAEAF QKDFTKSTKE RLLLTAGVSA
GRQMIDNSYQ VEKLAKDLDF INLLSFDHFG SWEKPLITGH NSPLSKGWQD RGPSSYYNVE YAVGYWIHKG MPSEKVMGI
PTYGHSFTLA SAETTVGAPA SGPGAAGPIT ESSGFLAYYE ICQFLKGAKI TRLQDQQVPY AVKGNQWVGY DDVKSMETKV
QFLKLNLLGG AMIWSIDMDD FTGKSCNQGP YPLVQAVKRS LGSLEHHHH HH

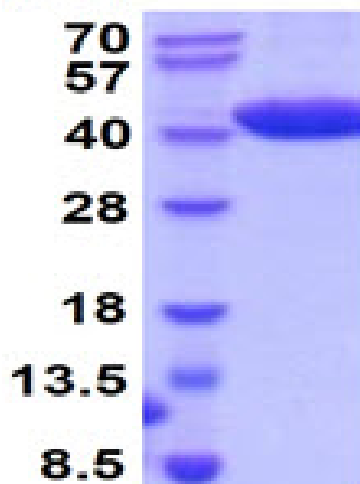
General References

Hu B., et al. (1996) J. Biol. Chem. 271:19415-19420.
Gratchev A., et al. (2008) Biomarker Insights. 3:39-44.

DATA

SDS-PAGE

(kDa)



3ug by SDS-PAGE under reducing condition and visualized by coomassie blue stain.

15% SDS-PAGE (3ug)