

# Recombinant mouse Cathepsin B protein

Catalog Number: ATGP3308

## PRODUCT INFORMATION

---

### Expression system

Baculovirus

### Domain

18-339aa

### UniProt No.

P10605

### NCBI Accession No.

NP\_031824

### Alternative Names

Cathepsin B, Ctsb, CB, Cathepsin B1, CatB

## PRODUCT SPECIFICATION

---

### Molecular Weight

36.4 kDa (330aa)

### Concentration

0.5mg/ml (determined by absorbance at 280nm)

### Formulation

Liquid in. Phosphate-Buffered Saline (pH 7.4) containing 10% glycerol

### Purity

> 90% by SDS-PAGE

### Endotoxin level

< 1 EU per 1ug of protein (determined by LAL method)

### Tag

His-Tag

### Application

SDS-PAGE

### Storage Condition

Can be stored at +2C to +8C for 1 week. For long term storage, aliquot and store at -20C to -80C. Avoid repeated freezing and thawing cycles.

## BACKGROUND

---

### Description

CTSB, also known as cathepsin B preproprotein, is a papain-family cysteine protease that is normally located in lysosomes. It has the ability to degrade several extracellular matrix components at both neutral and acidic pH and has been implicated in the progression of several human and rodent tumors progression and arthritis. Recombinant mouse CTSB, fused to His-tag at C-terminus, was expressed in insect cell and purified by using

# Recombinant mouse Cathepsin B protein

Catalog Number: ATGP3308

conventional chromatography techniques.

## Amino acid Sequence

HDKPSFHPLS DDLINYINKQ NTTWQAGRNF YNVDISYLKK LCGTVLGGPK LPGRVAFGED IDLPETFDAR EQWSNCPTIG  
QIRDQGSCGS CWAFGAVEAI SDRTCIHTNG RVNVEVSAED LLTCCGIQCG DGCNNGYPSG AWSFWTKKGL VSGGVYN  
SHV GCLPYTIPPC EHHVNGSRPP CTGEGDTPRC NKSCEAGYSP SYKEDKHFGY TSYSVSNVSK EIMAEIYKNG PVEGAFTVFS  
DFLTYKSGVY KHEAGDMMGG HAIRILGWGV ENGVPYWLAA NSWNLDWGDN GFFKILRGEN HCGIESEIVA GIPRTDQYWG  
RFLEHHHHHH

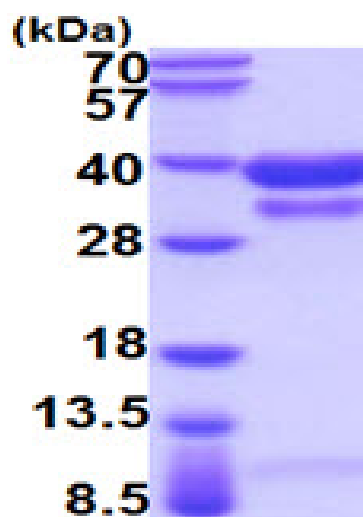
## General References

Podgorski I., et al. (2003) *Biochem Soc Symp.* 70:263-276.

Roshy S., et al. (2003) *Cancer Metastasis Rev.* 22:271-286.

## DATA

### SDS-PAGE



3ug by SDS-PAGE under reducing condition and visualized by coomassie blue stain.

15% SDS-PAGE (3ug)