

Recombinant mouse Cathepsin L protein

Catalog Number: ATGP3318

PRODUCT INFORMATION

Expression system

Baculovirus

Domain

18-334aa

UniProt No.

P06797

NCBI Accession No.

NP_034114

Alternative Names

Procathepsin L, Cathepsin L1, Major excreted protein, MEP, CTSL, CTSL1, p39 cysteine proteinase

PRODUCT SPECIFICATION

Molecular Weight

36.8 kDa (325aa)

Concentration

0.25mg/ml (determined by absorbance at 280nm)

Formulation

Liquid in. Phosphate-Buffered Saline (pH 7.4) containing 10% glycerol

Purity

> 90% by SDS-PAGE

Endotoxin level

< 1 EU per 1ug of protein (determined by LAL method)

Tag

His-Tag

Application

SDS-PAGE

Storage Condition

Can be stored at +2C to +8C for 1 week. For long term storage, aliquot and store at -20C to -80C. Avoid repeated freezing and thawing cycles.

BACKGROUND

Description

CTSL, also known as cathepsin L1, is a lysosomal cysteine protease expressed in most eukaryotic cells. It plays a major role in intracellular protein catabolism and is potent in degrading collagen, laminin, elastin, as well as alpha-1 protease inhibitor and other structural proteins of basement membranes. Recombinant mouse CTSL, fused to His-tag at C-terminus, was expressed in insect cell and purified by using conventional chromatography

Recombinant mouse Cathepsin L protein

Catalog Number: ATGP3318

techniques.

Amino acid Sequence

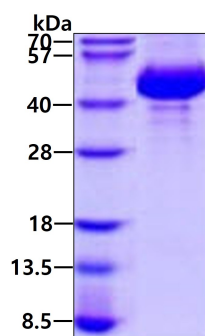
TPKFDQTFSA EWHQWKSTHR RLYGTNEEEW RRAIWEKNMR MIQLHNGEYS NGQHGFSMEM NAFGDMTNEE
FRQVVNGYRH QKHKKGRLFQ EPLMLKIPKS VDWREKGCVT PVKNQGQCGS CWAFSASGCL EGQMFLKTGK LISLSEQNLV
DCSHAQGNQG CNGGLMDFAF QYIKENGGLD SEESYPYEAH DGSCKYRAEF AVANDTGFVD IPQQEKALMK AVATVGPISV
AMDASHPSLQ FYSSGIYYEP NCSSKNLDHG VLLVGYGYEG TDSNKNKYWL VKNSWGSEWG MEGYIKIAKD RDNHCGLATA
ASYPVVN<LEH HHHHH>

General References

Goretzki L., et al. (1992) FEBS Lett. 297:112-118.
Taggart CC., et al. (2001) J Biol Chem. 276:33345-33352.

DATA

SDS-PAGE



3ug by SDS-PAGE under reducing condition and visualized by coomassie blue stain.